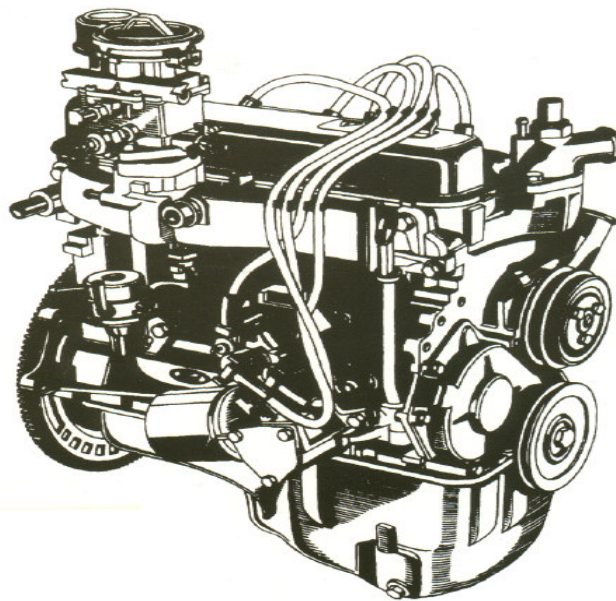




Ford Component Sales

VSG-411-413 SERVICE PARTS MANUAL



67 / 79 Cubic Inch 1.1 / 1.3 Liter OHV Inline Four Cylinder

**Reproduction in whole or in part, is prohibited without permission in writing from
Ford Component Sales**

July, 2008

Ford Power Products Distributor Directory

Anderson Industrial Engines
5532 Center Street
Omaha, NE. 68106
800 747 1438

E.C. Power Systems
1805 Northwest 21st Avenue
Portland, OR. 97296-0286
800 452 1511

E.C. Power Systems
8360 E. Via de Ventura, Suite L-200
Scottsdale, AZ. 85258
480 905 5585

E.C. Power Systems
4499 Market Street
Boise, ID. 83705-5428
800 354 6767

E.C. Power Systems
3104 C Street Northeast Suite 200
Auburn, WA. 98002
800 247 5899

E.C. Power Systems
3233 Oakland Street
Aurora, CO. 80010
800 678 3673

E.C. Power Systems
3683 West 2270 South Suite A
Salt Lake City, UT. 84120
800 705 3699

Engine Center
2351 Hilton Road
Ferndale, MI. 48220
800 726 8870

Engine Distributors
400 University Court
Blackwood, N.J. 08012
800 220 2700

Engine Power
1830 Executive Drive
Oconomowoc, WI. 53036-4831
800 457 7056

Graham Ford
P.O. Box 789
Columbus, OH. 43216
800 837 7070

Highway Equipment & Supply Co.
1016 West Church Street
Orlando, FL. 32854-7189
800 827 6495

Highway Equipment & Supply Co.
4850 Collins Road Unit 103
Orange Park, FL. 32073
904 215 6356

Highway Equipment & Supply Co.
6015 U.S. Highway 301 North
Tampa, FL. 33610
800 827 9092

Industrial Engines LTD.
1020 Cliveden Avenue
Annacis Island, Delta B.C. V3M-5R5
877 438 6560

Industrial Engines LTD.
14335 12th Avenue
Edmonton, AB. T5L-2R8
888 887 0008

Kansas City Power Products
80 South James Street
Kansas City, KS. 66118-1128
800 486 5277

Lightbourn Equipment Co.
P.O. Box 101870
Dallas, TX. 75380-1870
972 233 5151

Lightbourn Equipment Co.
8272 El Rio, Suite 110
Houston, TX. 77054
713 741 2003

Lunenburg Industrial Foundry
53 Falkland Street
Lunenburg, Nova Scotia B0J-2C0
877 259 5433

M&I Equipment and Engine Co. Inc.
30762 Highway 181
Daphne, AL. 36526
800 633 1834

M-K Power Products Corporation
5641 Mc Adam Road
Mississauga, Ontario L4Z-1N9
905 890 6660

North Coast Ford Industrial Inc.
11885 Bellaire Road
Cleveland, OH. 44135
800 423 1316

Northern Power Products Inc.
2859 Lexington Avenue P.O. Box 21348
Eagan, MN. 55121-0348
800 284 6247

Pitt Auto Electric Co.
1241 Freedom Road
Cranberry Township, PA. 16006
800 367 3463

Powertech Engines Inc.
2933 East Hamilton Avenue
Fresno, CA. 93721
800 750 1776

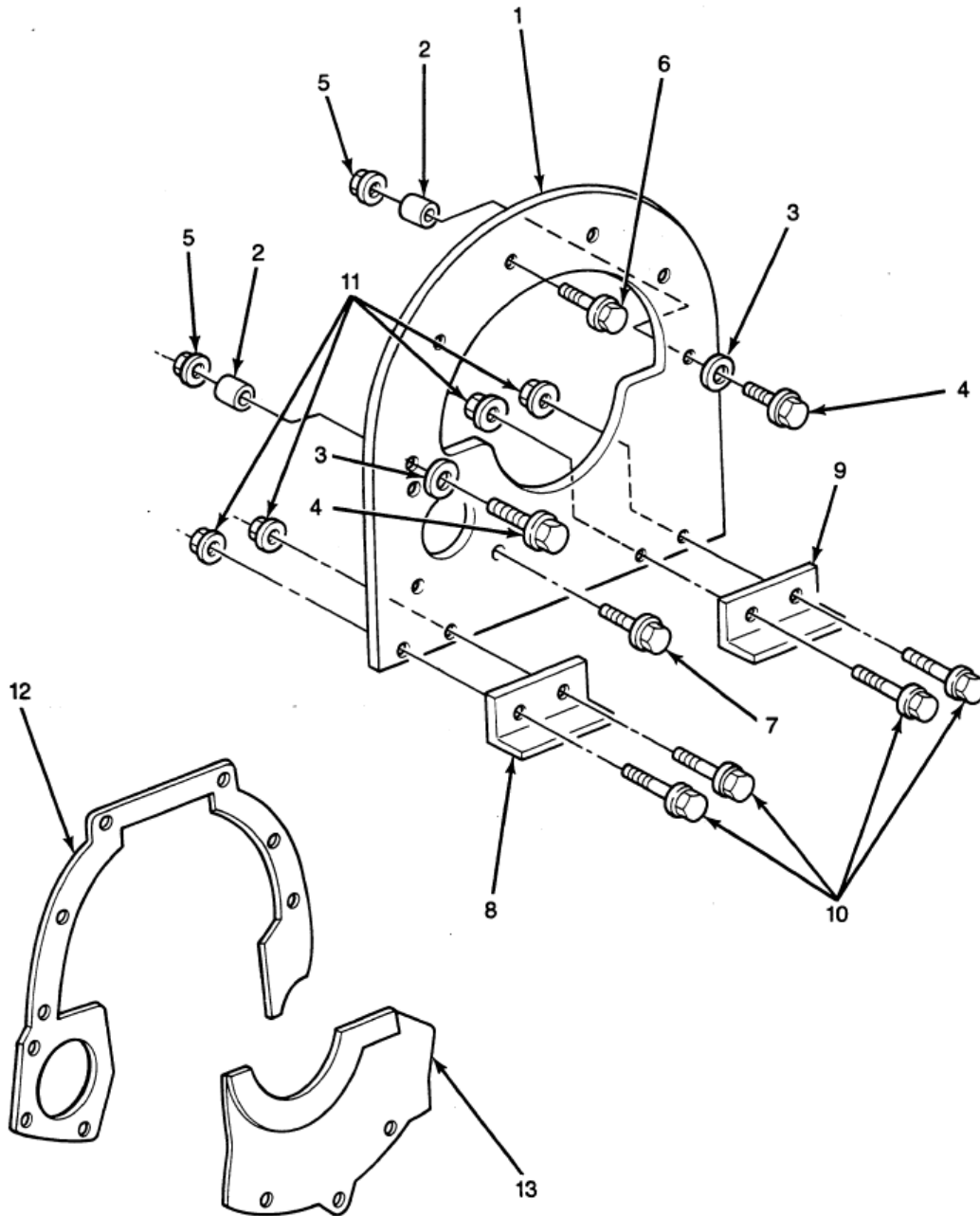
FORD COMPONENT SALES
VSG - 411 - 413
INDEX

AIR CLEANER	33
ALTERNATOR	35
BLOCK	5
CAMSHAFT AND BEARINGS	13
CARBURETORS	29
CHOKE AND THROTTLE CABLE	49
CLUTCH ASSEMBLY	17
CONNECTING RODS AND BEARINGS	15
CRANKSHAFT AND BEARINGS	15
CYLINDER HEAD	9
EXHAUST SYSTEM	27
FAN	23
FLYWHEEL AND RING GEAR	17
FLYWHEEL HOUSING	17
FUEL FILTER	25
FUEL PUMP	25
GASKET KITS	5
GOVERNOR	45
HOSES – COOLING SYSTEM	47
IGNITION SYSTEM	39
INSTRUMENTS AND PANEL	51
MANIFOLDS – INTAKE AND EXHAUST	27
OIL FILTER	21
OIL PAN	21
OIL PUMP	21
PISTONS AND RINGS	15
POWER TAKE OFF ASSEMBLY	19
RADIATOR	47
RADIATOR SUPPORT	47
RETRAINER AND SEAL – REAR ENGINE OIL	15
SENSOR – WATER TEMPERATURE	23
STARTER MOTOR	37
SUPPORT – REAR ENGINE	3
THERMOSTAT	23
TIMING CHAIN	11
TIMING COVER	11
TRANSDUCER – IGNITION.	43
VALVES AND RELATED PARTS.	9
VALVE COVER	9
WATER PUMP	23
WIRING HARNESSSES	51

FORD COMPONENT SALES

VSG - 411 - 413

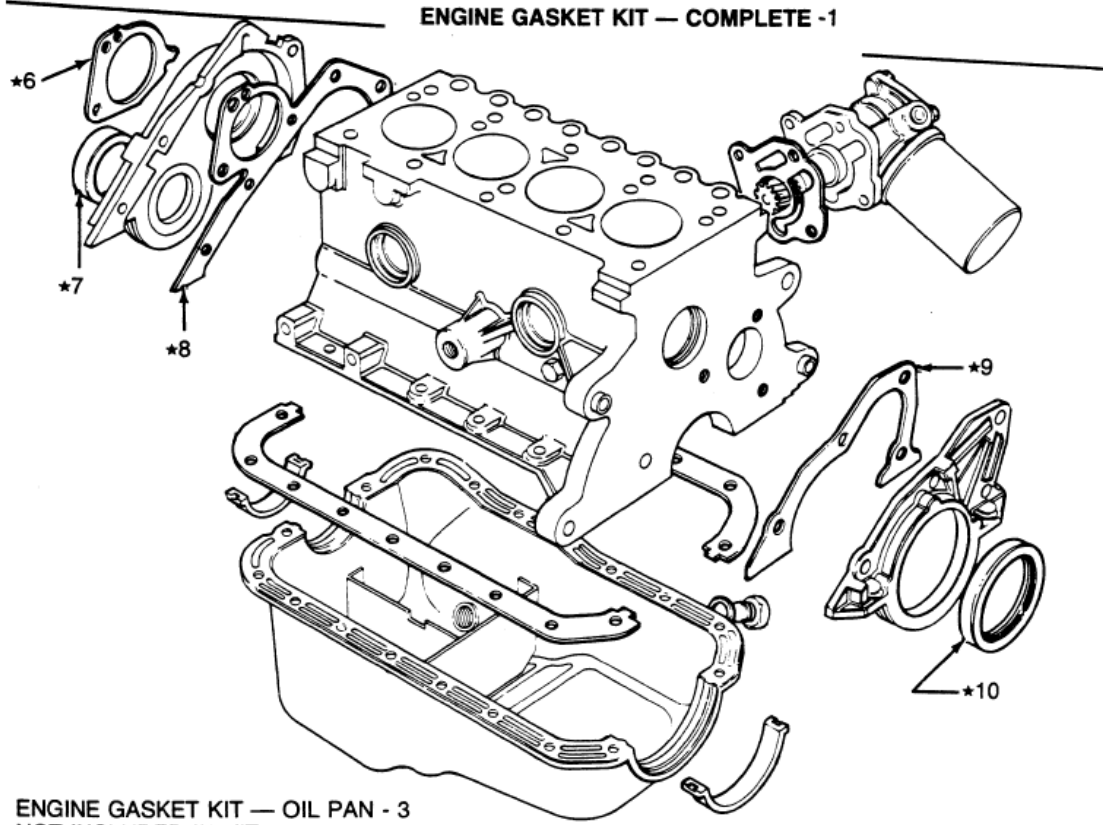
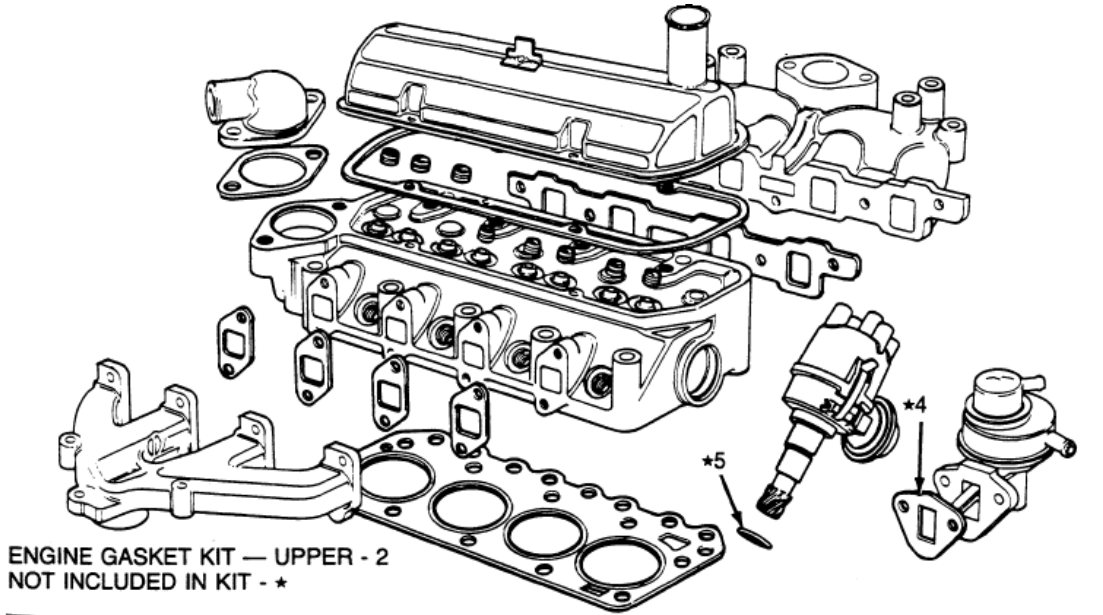
REAR ENGINE SUPPORT



SUPPORT — REAR ENGINE SUPPORT AND RELATED PARTS — TYPICAL

IF-526A

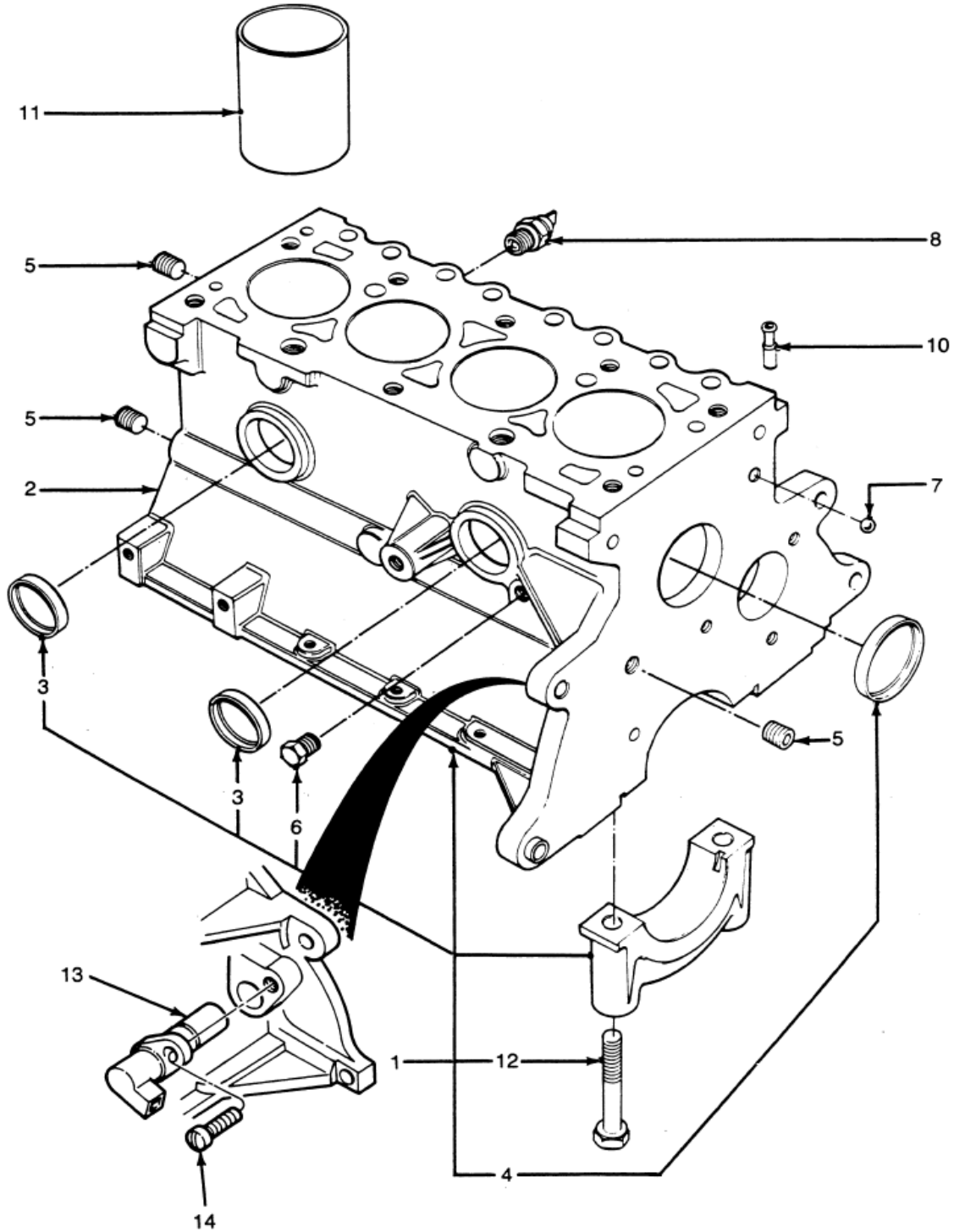
FORD COMPONENT SALES
VSG - 411 - 413
ENGINE GASKETS



ENGINE GASKET KITS — TYPICAL

IE-476A

FORD COMPONENT SALES
VSG - 411 - 413
CYLINDER BLOCK & RELATED PARTS



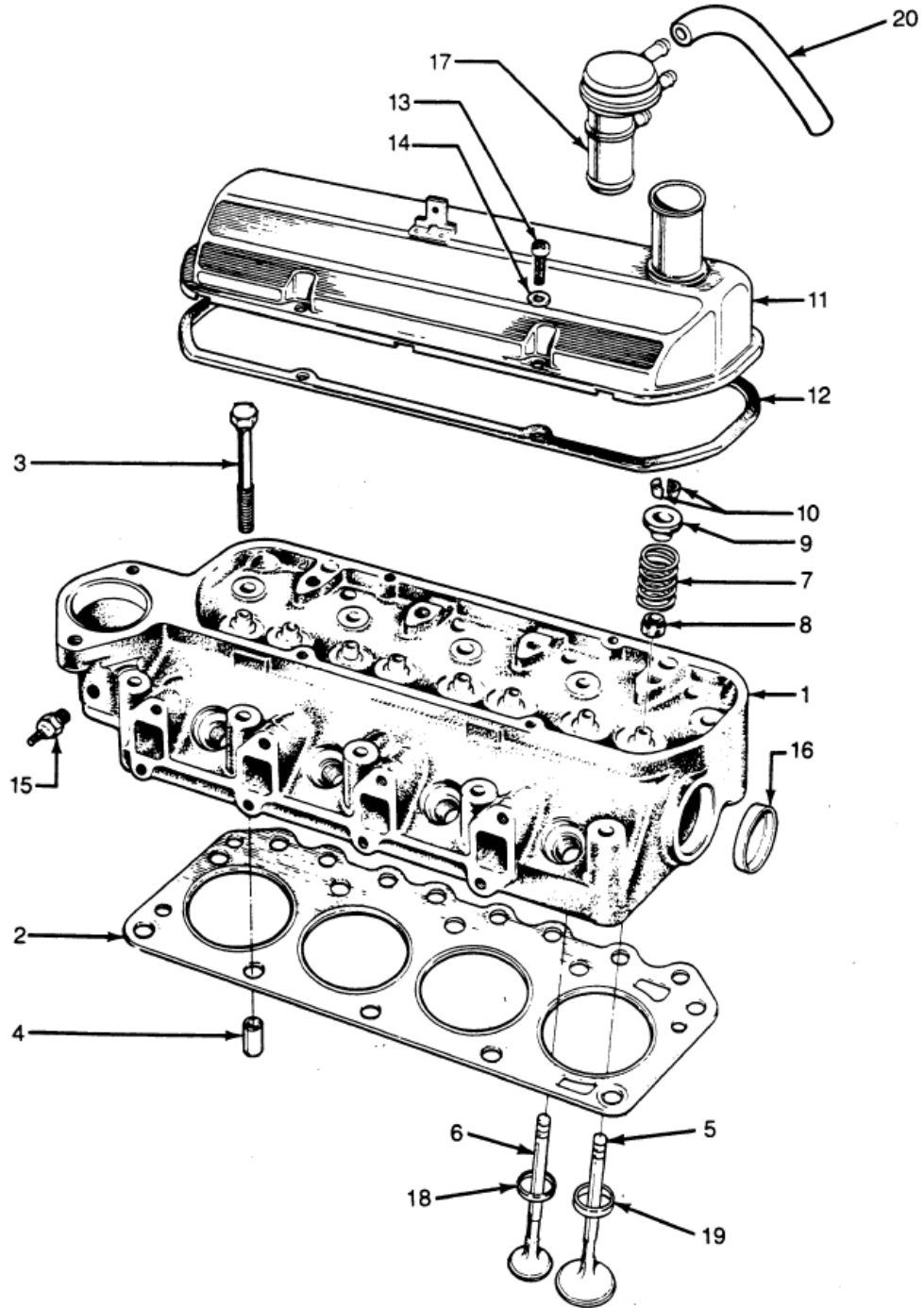
CYLINDER BLOCK AND RELATED PARTS — TYPICAL

IE-477A

FORD COMPONENT SALES
VSG - 411 - 413
CYLINDER BLOCK & RELATED PARTS

ENG. NUMBER	PART NUMBER	DESCRIPTION	411	413
W713214 S300 92BB 9278 AA E855216 S 81SM 6345 AA 89BF 6C315 AC 948F 6C315 AA	W713214 S300 F5RZ 9278 A 89BM 6055 BA 81SM 6345 AA 89BF 6C315 AC F5RZ 6C315 AA	PLUG, BALL, OIL GALLERY, 11 MM (.43) (NOT REP. 11-06) SWITCH, OIL PRESSURE (SW 5029) # LINER, CYLINDER BOLT, MAIN BEARING CAP (NOT REP. 11-06) # TRANSDUCER, IGN. CONTROL (LENGTH 39.7 MM) # TRANSDUCER, IGN. CONTROL (LENGTH 37.5 MM) (DY 913)	1 1 AR 1 1	1 1 AR AR 1 1
* USED ON @ USED ON # USED ON & USED ON	ENGINES HAVING ENGINES HAVING ENGINES HAVING ENGINES HAVING	A BREAKER POINT IGNITION SYSTEM A SOLID STATE IGNITION SYSTEM A DISTRIBUTORLESS IGNITION SYSTEM A BREAKER POINT OR SOLID STATE IGNITION SYSTEM		

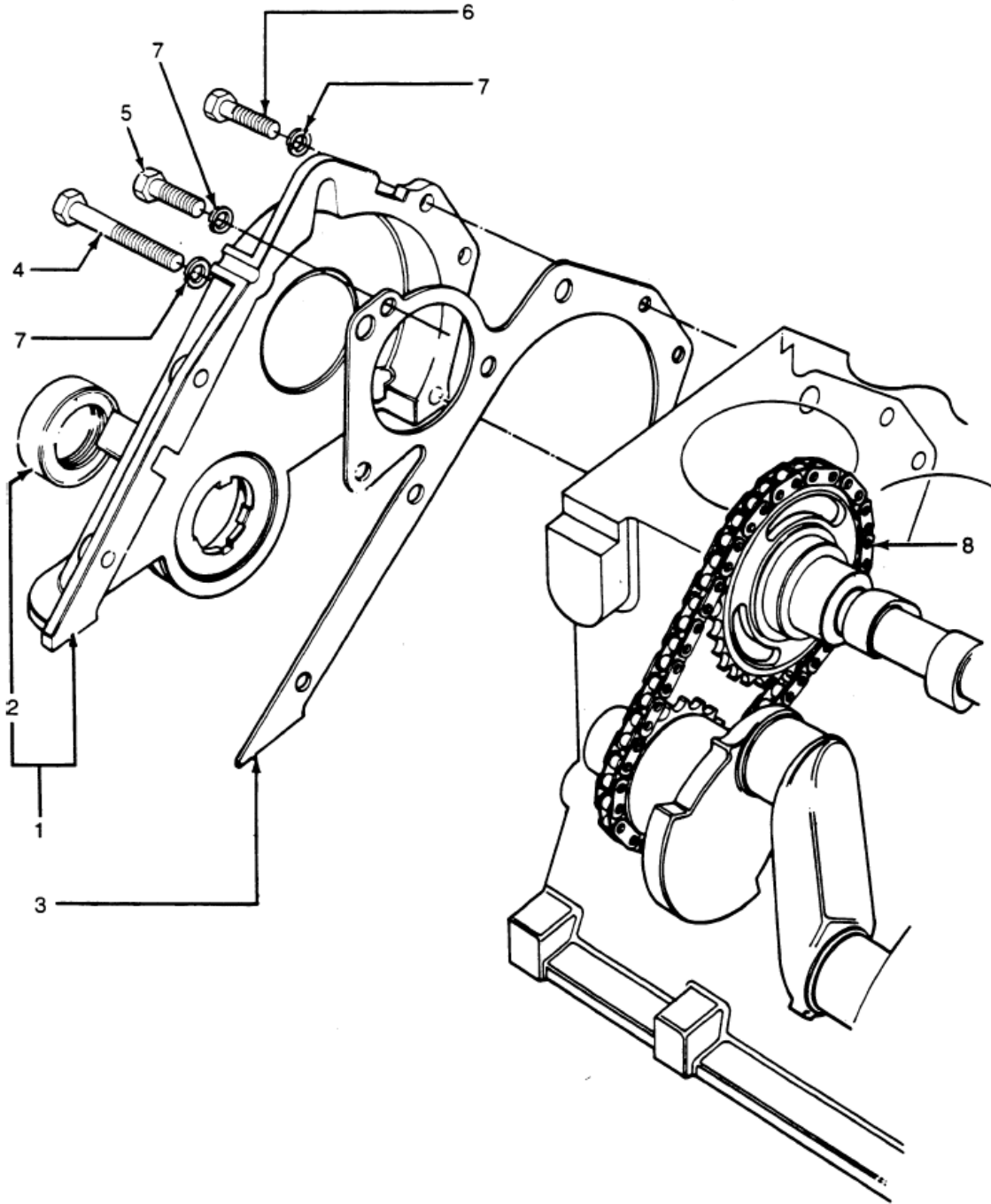
FORD COMPONENT SALES
VSG - 411 - 413
CYLINDER HEAD & RELATED PARTS



CYLINDER HEAD, VALVES AND RELATED PARTS — TYPICAL

IE-478B

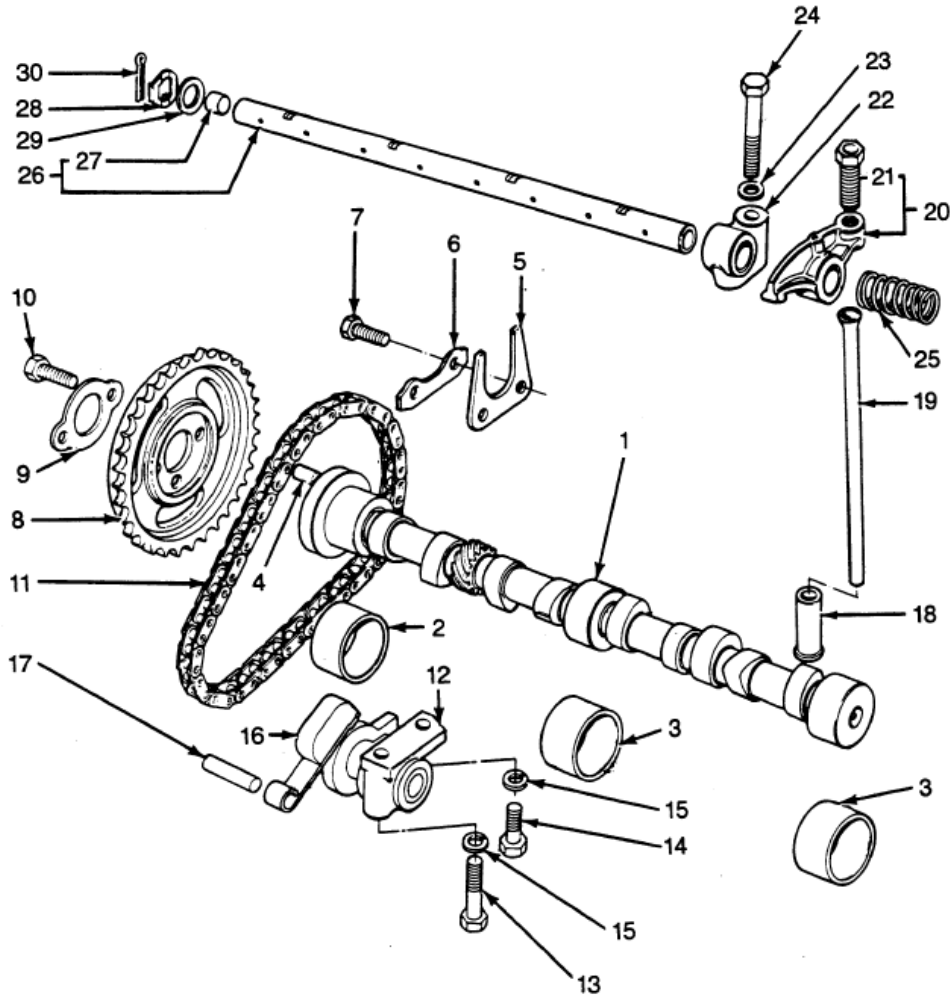
FORD COMPONENT SALES
VSG - 411 - 413
FRONT COVER & RELATED PARTS



FRONT COVER ASSEMBLY AND RELATED PARTS — TYPICAL

IE-479

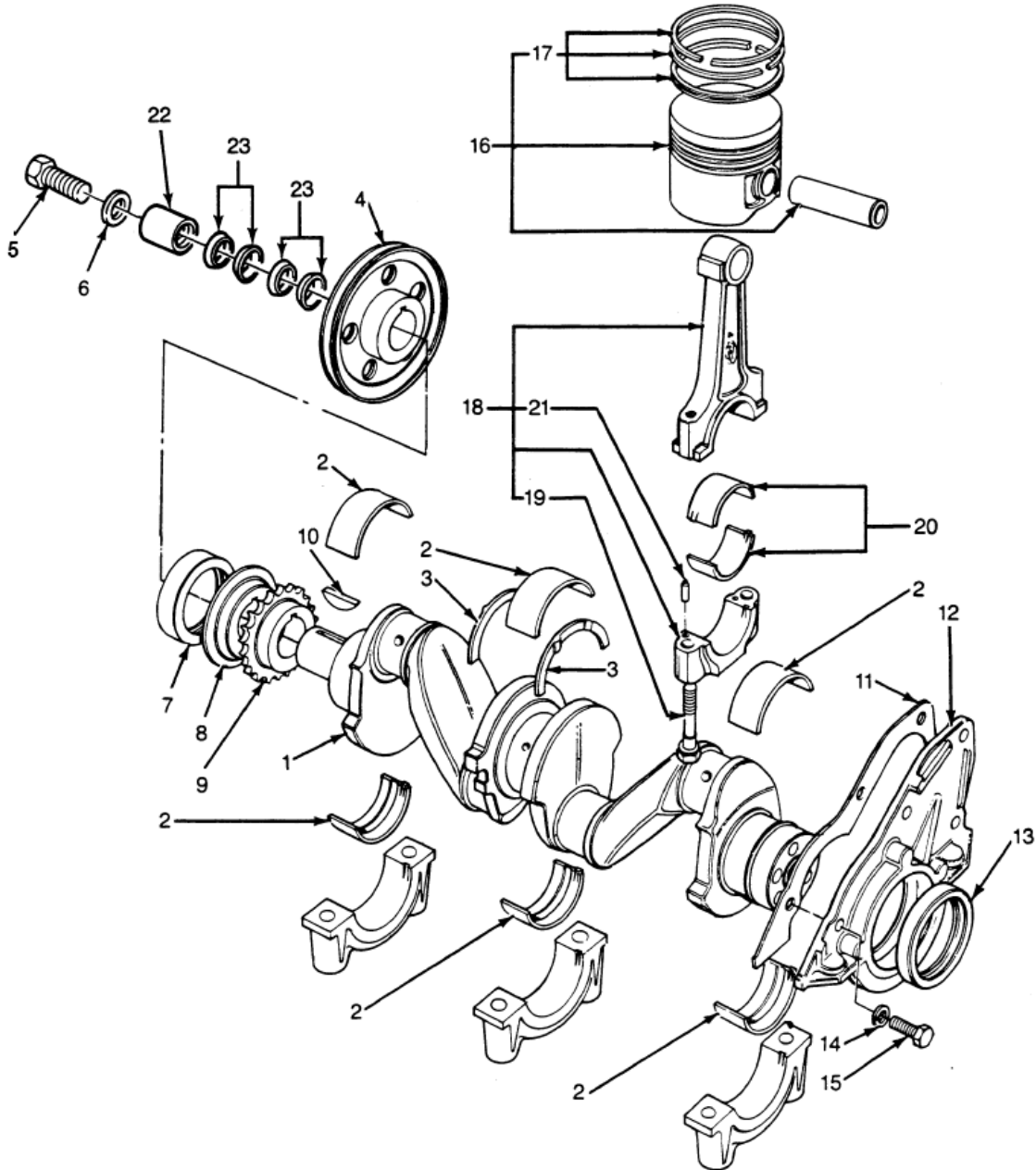
FORD COMPONENT SALES
VSG - 411 - 413
CAMSHAFT & VALVETRAIN



CAMSHAFT AND VALVE CONTROL — TYPICAL

IE-480

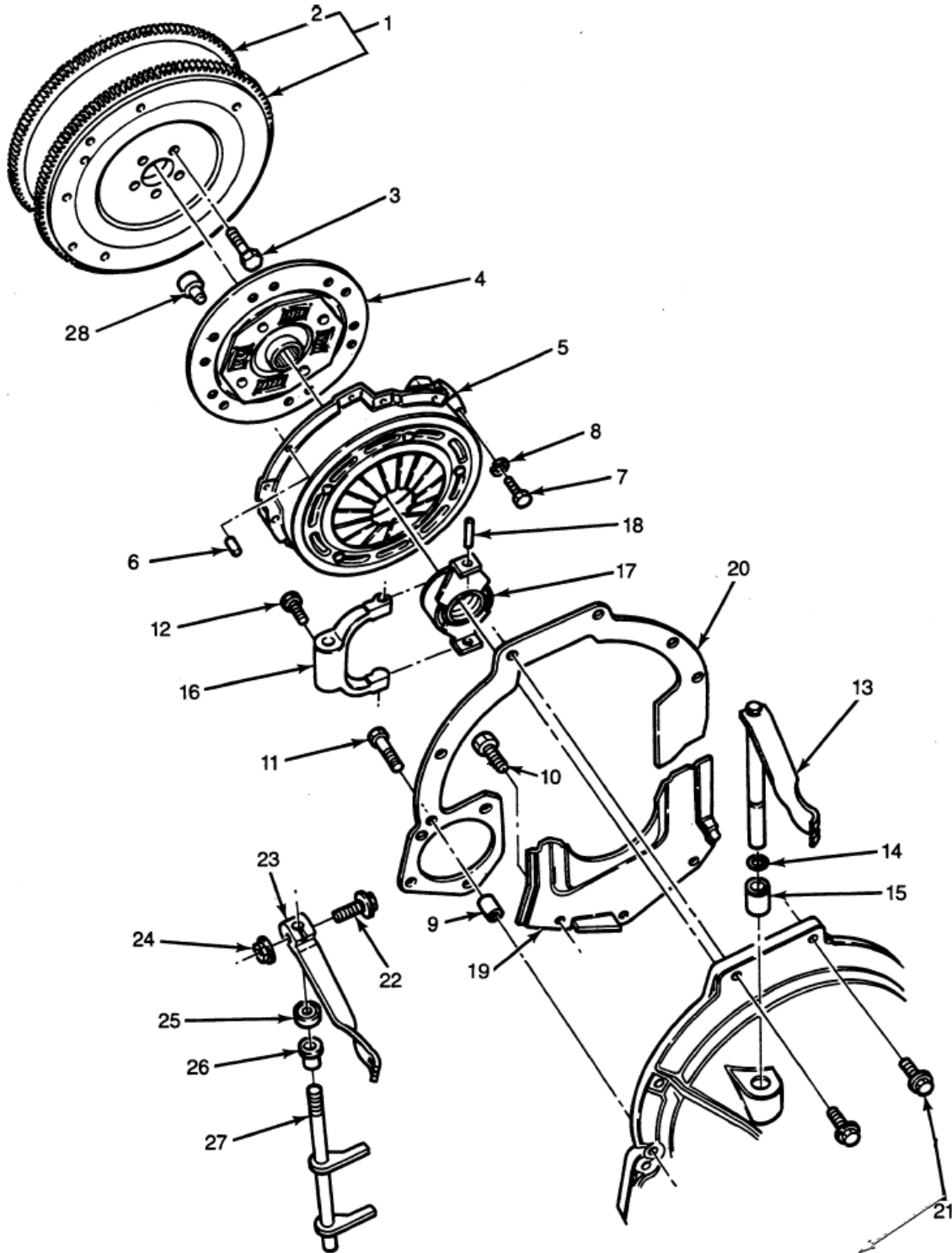
FORD COMPONENT SALES
VSG - 411 - 413
CRANKSHAFT, PISTON & RELATED PARTS



CRANKSHAFT, PISTON AND RELATED PARTS — TYPICAL

IE-481A

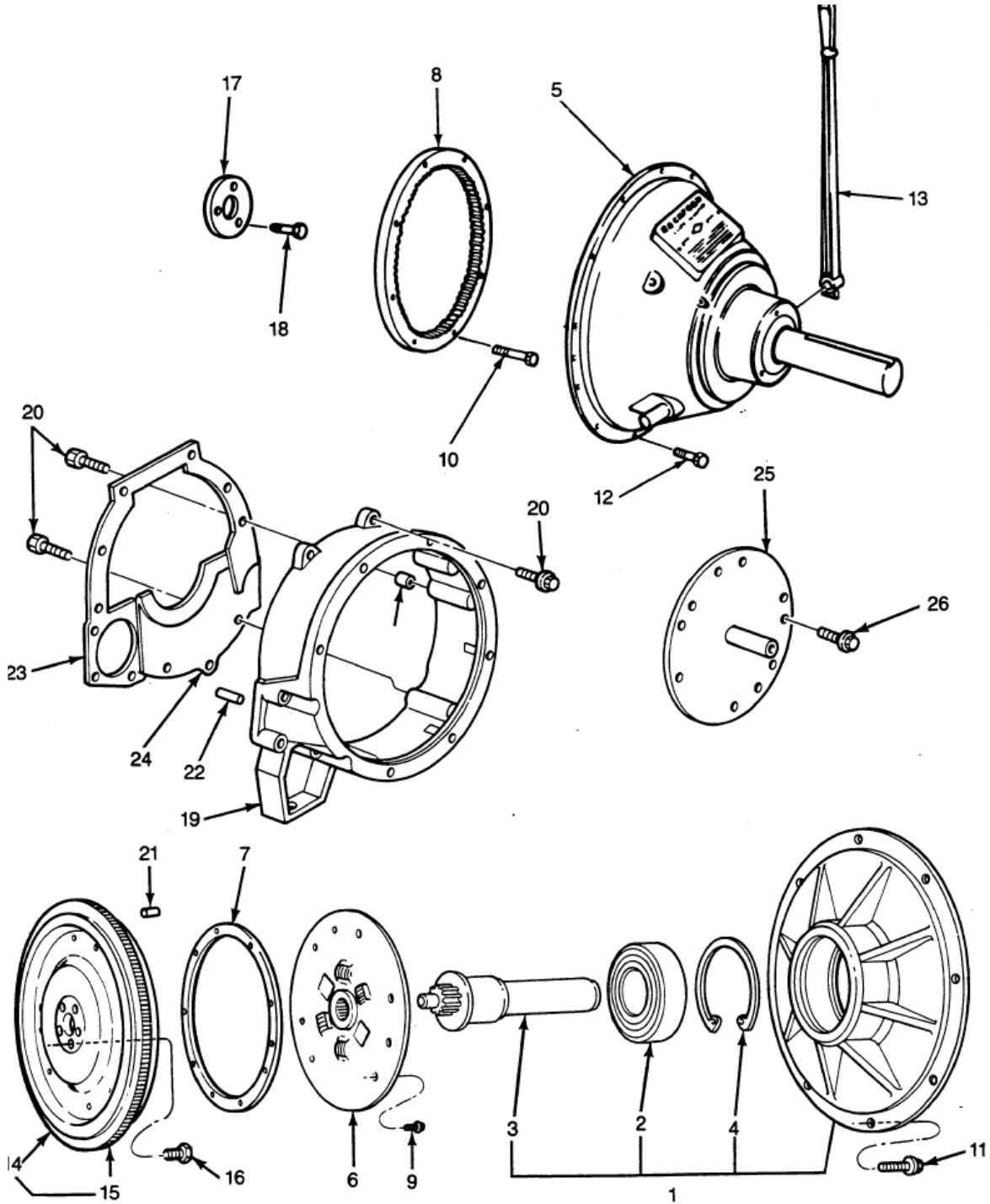
FORD COMPONENT SALES
VSG - 411 - 413
FLYWHEEL, CLUTCH & RELATED PARTS



FLYWHEEL, CLUTCH AND RELATED PARTS — TYPICAL

IE-482C

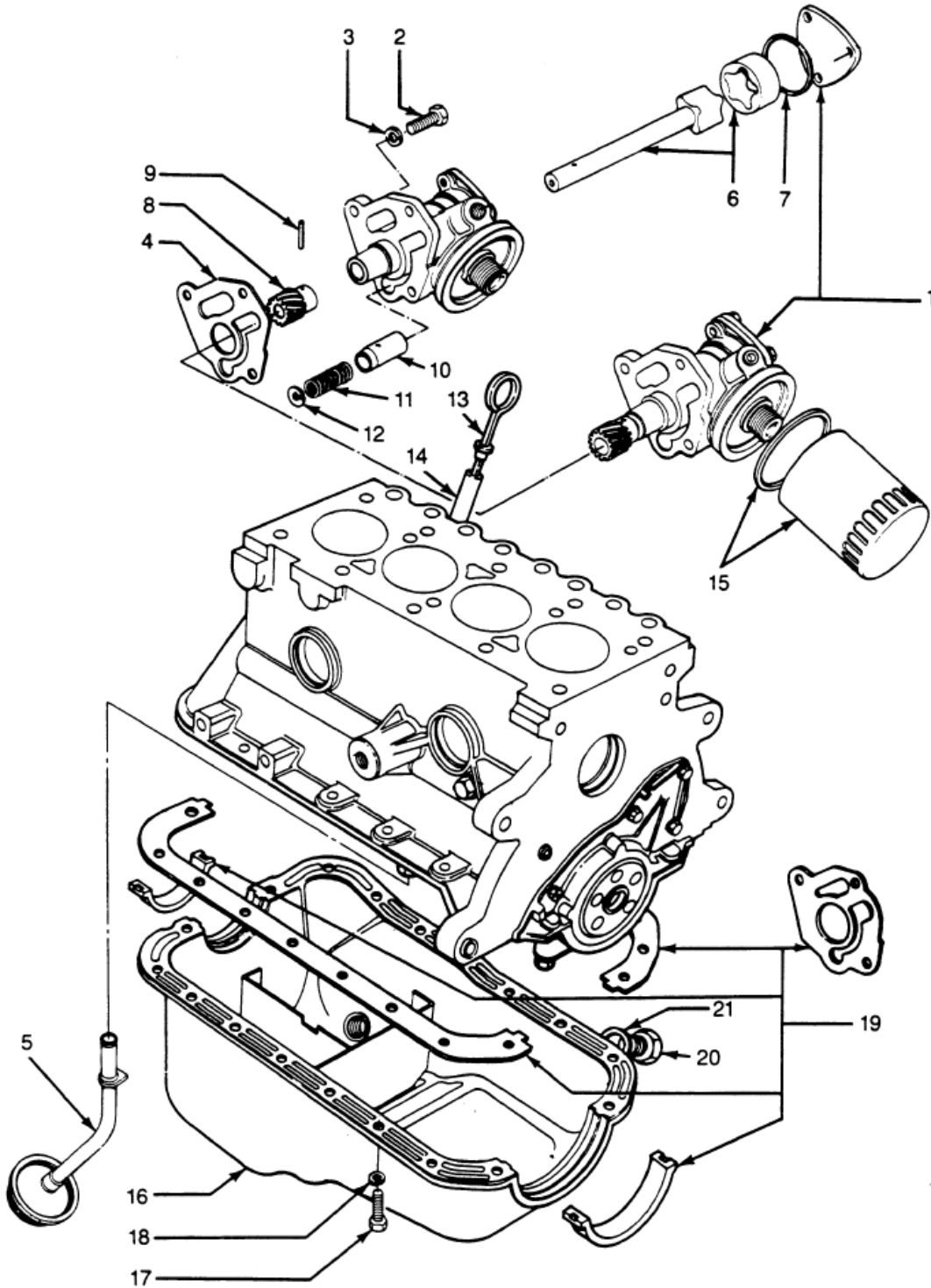
FORD COMPONENT SALES
VSG - 411 - 413
PTO, HOUSING & RELATED PARTS



PTO, FLYWHEEL, FLYWHEEL HOUSING AND RELATED PARTS — TYPICAL

IE-483C

FORD COMPONENT SALES
VSG - 411 - 413
OIL PAN, OIL PUMP & RELATED PARTS



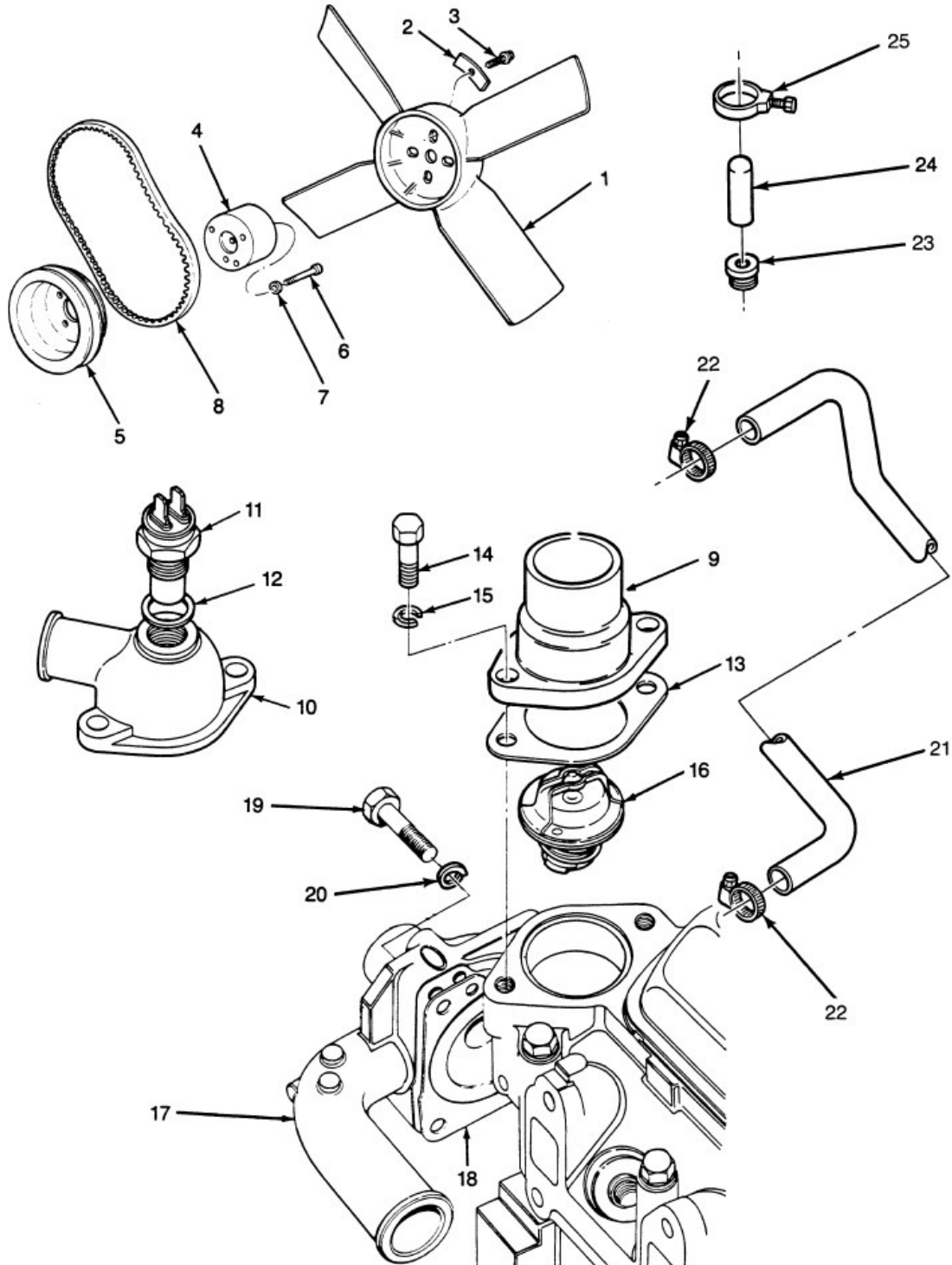
OIL PUMP, OIL PAN AND RELATED PARTS — TYPICAL

IE-484

FORD COMPONENT SALES
VSG - 411 - 413
OIL PAN, OIL PUMP & RELATED PARTS

ENG. NUMBER	PART NUMBER	DESCRIPTION	411	413
77BM 6600 BA	D8RZ 6600 A	OIL PUMP, INCLUDING GEAR	1	1
E800519 S72	E800519 S72	# BOLT	3	3
96BM 6659 A1A	96BM 6659 A1A	GASKET, OIL PUMP TO BLOCK	1	1
86BM 6617 AB	86BM 6617 AB	TUBE ASSEMBLY, OIL PICK UP	1	1
92BM 6750 AB	92BM 6750 AB	INDICATOR, OIL LEVEL	1	1
96BM 6784 AA	96BM 6784 AA	TUBE, OIL LEVEL INDICATOR	1	1
97MM 6714 B1A	97MM 6714 B1A	FILTER, OIL, 3.11" LONG (EFL 125)	1	1
XW4E 6731 EA	E4FZ 6731 AB	FILTER, OIL, 4.80" LONG (FL 400 S)	1	1
E3ZE 6714 DA	D4ZZ 6731 B	FILTER, OIL, 4.12" LONG (FL 300)	1	1
F87E 6714 AA	D9AZ 6731 A	FILTER, OIL, 5.31" LONG (FL 1 A)	1	1
86BM 6675 A1A	86BM 6675 A1A	# OIL PAN WITH PLUG	1	
86BM 6675 A1A	86BM 6675 A1A	OIL PAN WITH PLUG		1
34805 S8	34805 S8	WASHER, 1/4", LOCK	18	18
A85OX 6013 A2A	A85OX 6013 A2A	# OIL PAN GASKET KIT	1	
A85OX 6013 A2A	A85OX 6013 A2A	OIL PAN GASKET KIT		1
F75E 6730 BA	F75Z 6730 BA	OIL PAN DRAIN PLUG	1	1
F23E 6734 AA	F3DZ 6734 A	OIL PAN DRAIN PLUG GASKET	1	1
		<p>* ANY OF THESE THREE OIL FILTERS CAN BE USED. THEY ALL HAVE A GASKET DIAMETER OF 2.83 INCHES ANS A THREAD SIZE OF 3/4" - 16 UNF. THE DIFFERENT CASE DIMENSIONS MAY HELP WITH APPLICATIONS THAT FIT TIGHTLY OR HAVE OBSTRUCTIONS IN THE OIL FILTER AREA.</p> <p>D9AZ-6731-A / FL 1 A - 5.31 INCHES LONG, 3.64 INCHES DIAMETER D4ZZ-6731-B / FL 300 - 4.12 INCHES LONG, 3.81 INCHES DIAMETER E4FZ-6731-AB / FL 400 S - 4.80 INCHES LONG, 3.00 INCHES DIAMETER</p>		
* USED ON @ USED ON # USED ON & USED ON	ENGINES HAVING ENGINES HAVING ENGINES HAVING ENGINES HAVING	A BREAKER POINT IGNITION SYSTEM A SOLID STATE IGNITION SYSTEM A DISTRIBUTORLESS IGNITION SYSTEM A BREAKER POINT OR SOLID STATE IGNITON SYSTEM		

FORD COMPONENT SALES
VSG - 411 - 413
COOLING SYSTEM & RELATED PARTS



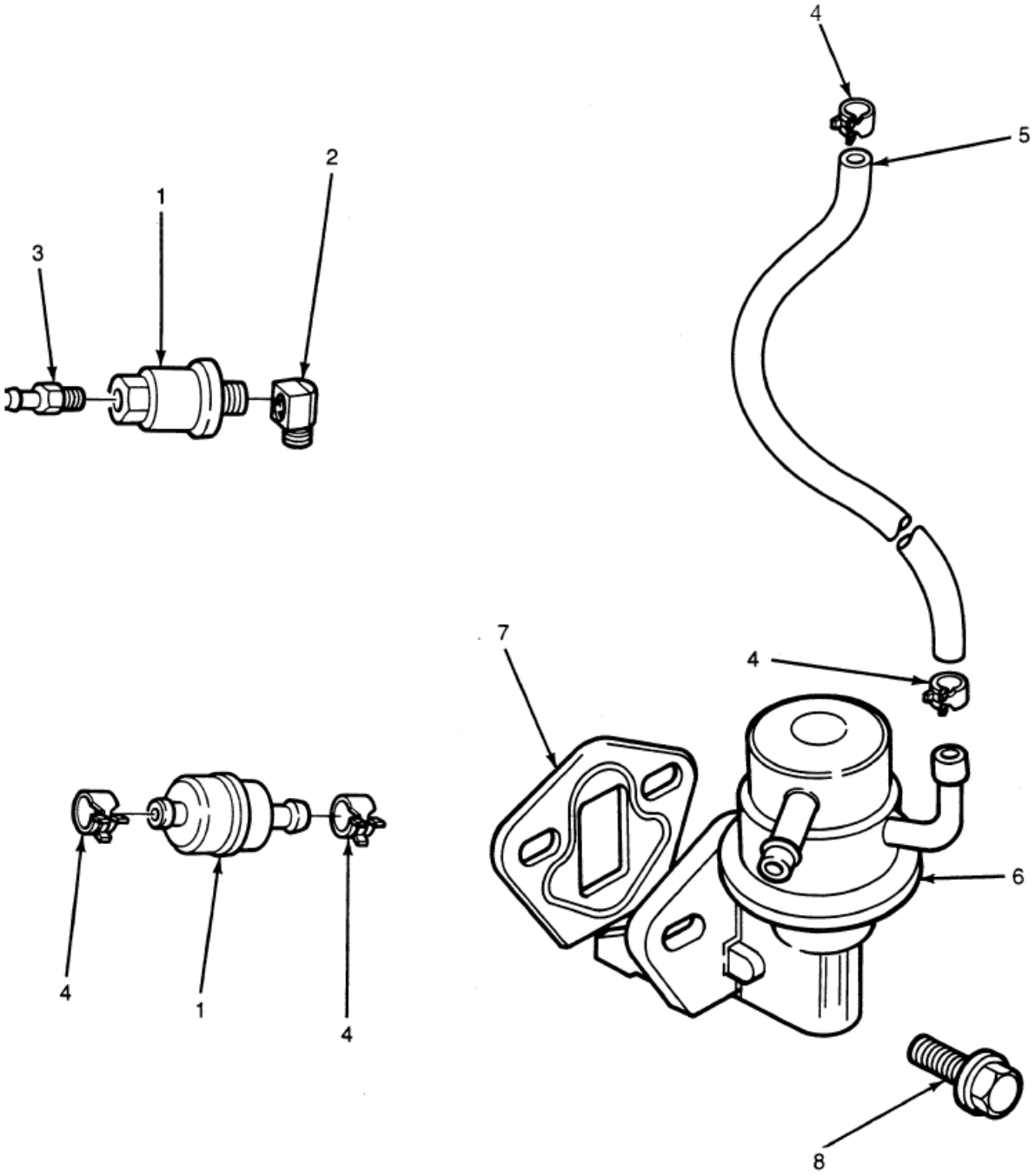
FAN, WATER PUMP, THERMOSTAT AND RELATED PARTS — TYPICAL

IE-485D

FORD COMPONENT SALES
VSG - 411 - 413
COOLING SYSTEM & RELATED PARTS

ENG. NUMBER	PART NUMBER	DESCRIPTION	411	413
79VB 8600 CB	79VB 8600 CB	FAN, 7 BLADE, 12.5" SUCTION (NOT REP. 08-06)	1	1
E8JL 8600 AA	E8JL 8600 AA	FAN, 6 BLADE, 15.0" PUSHER, 1.1 PILOT	1	1
E5JL 8N603 AA	E5JL 8N603 AA	STRAP, FAN (NOT REP. 03-06)	1	1
N605905 S106	N605905 S106	BOLT, M8 X 20	1	1
N605907 S309	N605907 S309	BOLT, M8 X 30, USE W / D8BZ 8600 E, FAN	3	3
E5JL 8546 BA	E5JL 8546 BA	^ SPACER, USE W / 79VB 8600 CB (NOT REP. 09-07)	1	1
F1JL 8546 AB	F1JL 8546 AB	* SPACER, .79" THICK, W / E8JL AA AND D8BZ E FANS	1	1
F1JL 8546 BB	F1JL 8546 BB	% SPACER, .79" THICK, W / 79VB 8600 CB FAN	1	1
F1JL 8546 CB	F1JL 8546 CB	! SPACER, .59" THICK, THREADED PILOT, E8JL AA	1	1
F1JL 8546 DB	F1JL 8546 DB	! SPACER, 1.44" THICK, THREADED PILOT, D8BZ E	1	1
F1JL 8546 EB	F1JL 8546 EB	! SPACER, 1.44" THICK, THREADED PILOT, E8JL AA	1	1
92BF 8509 AD	92BF 8509 AD	* W/P PULLEY, 1 GROOVE, 92BX W/P	1	1
D8RZ 8509 A	D8RZ 8509 A	W/P PULLEY, 2 GROOVE, 88BX W/P (NOT REP. 12-06)	1	1
F1JL 8509 AC	F1JL 8509 AC	* W/P PULLEY, 2 GROOVE, 92HBX W/P	1	1
E5JL 8B645 AA	E5JL 8B645 AA	BOLT, M6 X 45, 1.70 THICK SPACERS	3	3
W501021 S309	W501021 S309	BOLT, M6 X 12, NO SPACER	3	3
N800055 S	N800055 S	BOLT, M6 X 20	3	3
821F 6C301 AA	821F 6C301 AA	BELT, ALTERNATOR	1	1
96BM 8250 AC	96BM 8250 AC	THERMOSTAT HOUSING, VERTICAL	1	1
92BM 8592 AA	92BM 8592 AA	THERMOSTAT HOUSING, 90 DEGREE	1	1
E834047 S	E834047 S	WASHER, 22.9 MM X 30MM X 1MM FLAT (NOT REP. 07-07)	1	1
84BF 8255 AA	84BF 8255 AA	THERMOSTAT HOUSING GASKET	1	1
E602187 S72	E602187 S72	BOLT, M8 X 20	2	2
C5TE 8575 B	C5TE 8575 B	THERMOSTAT, 160 DEGREE	1	1
XR3Z 8575 BA	XR3Z 8575 BA	THERMOSTAT, 192 DEGREE (RT 1139)	1	1
A79OX 8591 H2FA	> A79OX 8591 H2FA	& WATER PUMP & GASKET (REPLACES D8RZ-8501-A) \$\$\$	1	1
92BX 8591 A2B	> 92BX 8591 A2B	# WATER PUMP, INCLUDES GASKET %%%	1	1
92BX 8591 C2B	> 92BX 8591 C2B	# WATER PUMP, INCLUDES GASKET @@@	1	1
89BM 8507 AA	89BM 8507 AA	WATER PUMP GASKET	1	1
E9JL 8548 CA	E9JL 8548 CA	BY PASS HOSE	1	1
E6TZ 9171 CA	E6TZ 9171 CA	HOSE CLAMP, 1.12 (YF 3282)	2	2
386800 S	C9AZ 9C492 A	CAP, WATER OUTLET NIPPLE	1	1
C9AJ 8287 A	C9AZ 8287 AA	HOSE CLAMP (YF 3266)	2	2
		> REFER TO PRODUCT MODIFICATION BULLETIN #217 DATED MAY 10 TH , 1991 FOR ASSISTANCE IN CHOOSING THE CORRECT REPLACEMENT WATER PUMP		
		\$\$\$ SHORT PUMP (69.5mm) WITH REVERSE INLET %%% LONG PUMP (76.3mm) WITH STRAIGHT INLET @@@ SHORT PUMP (69.5mm) WITH STRAIGHT INLET		
* USED ON ^ USE WITH % USE WITH ! USE WITH	ENGINES WITH A 88BX 8591 AA, F1JL8509 AC, 92BF8509 AB,	DISTRIBUTORLESS IGNITION SYSTEM WATER PUMP PULLEY AND 92BX 8591 AA, WATER PUMP PULLEY AND 92BX 8591 AA, WATER PUMP		

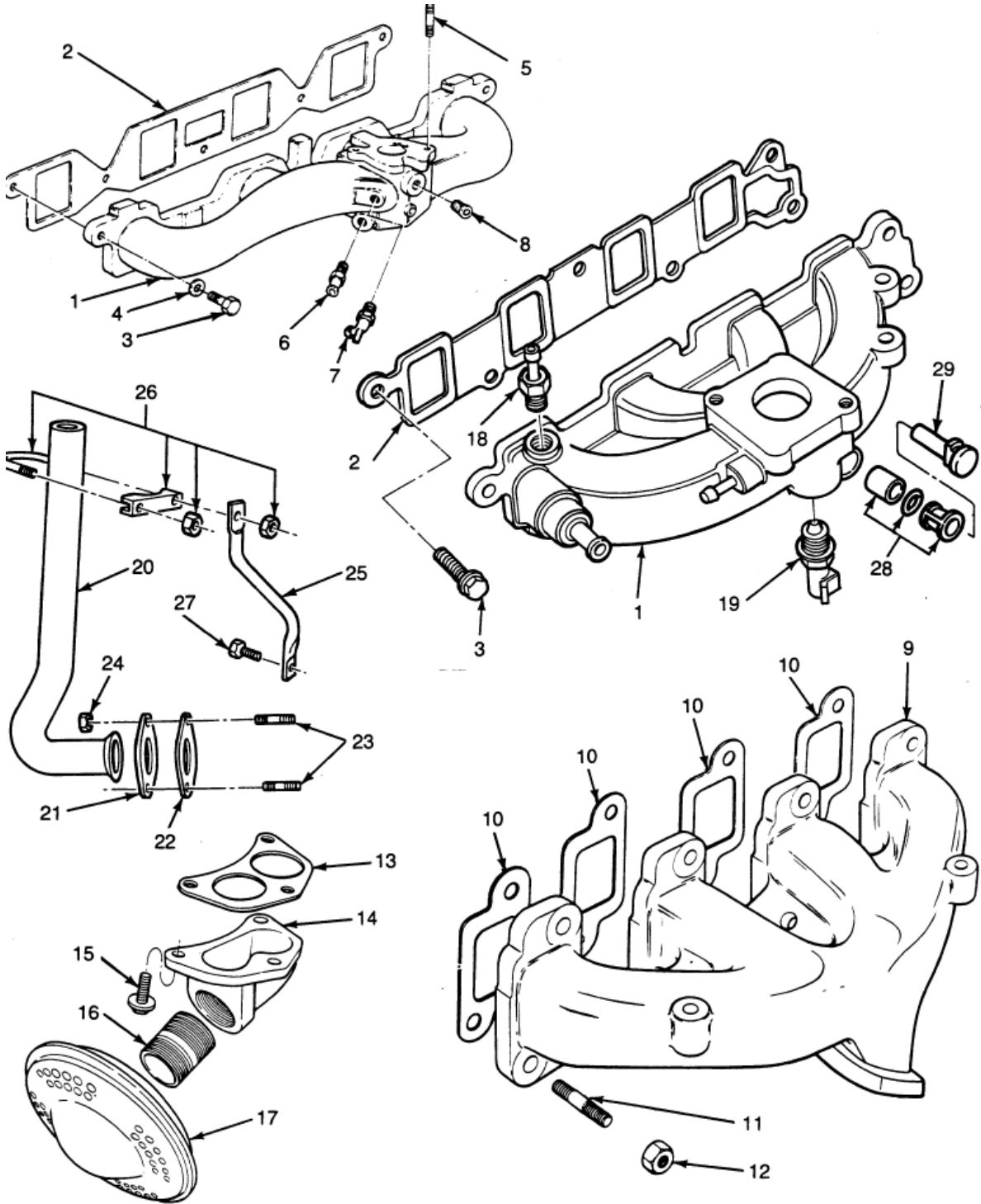
FORD COMPONENT SALES
VSG - 411 - 413
FUEL PUMP, FILTER & RELATED PARTS



FUEL FILTER, FUEL PUMP AND RELATED PARTS — TYPICAL

IE-486B

FORD COMPONENT SALES
VSG - 411 - 413
MANIFOLDS & RELATED PARTS



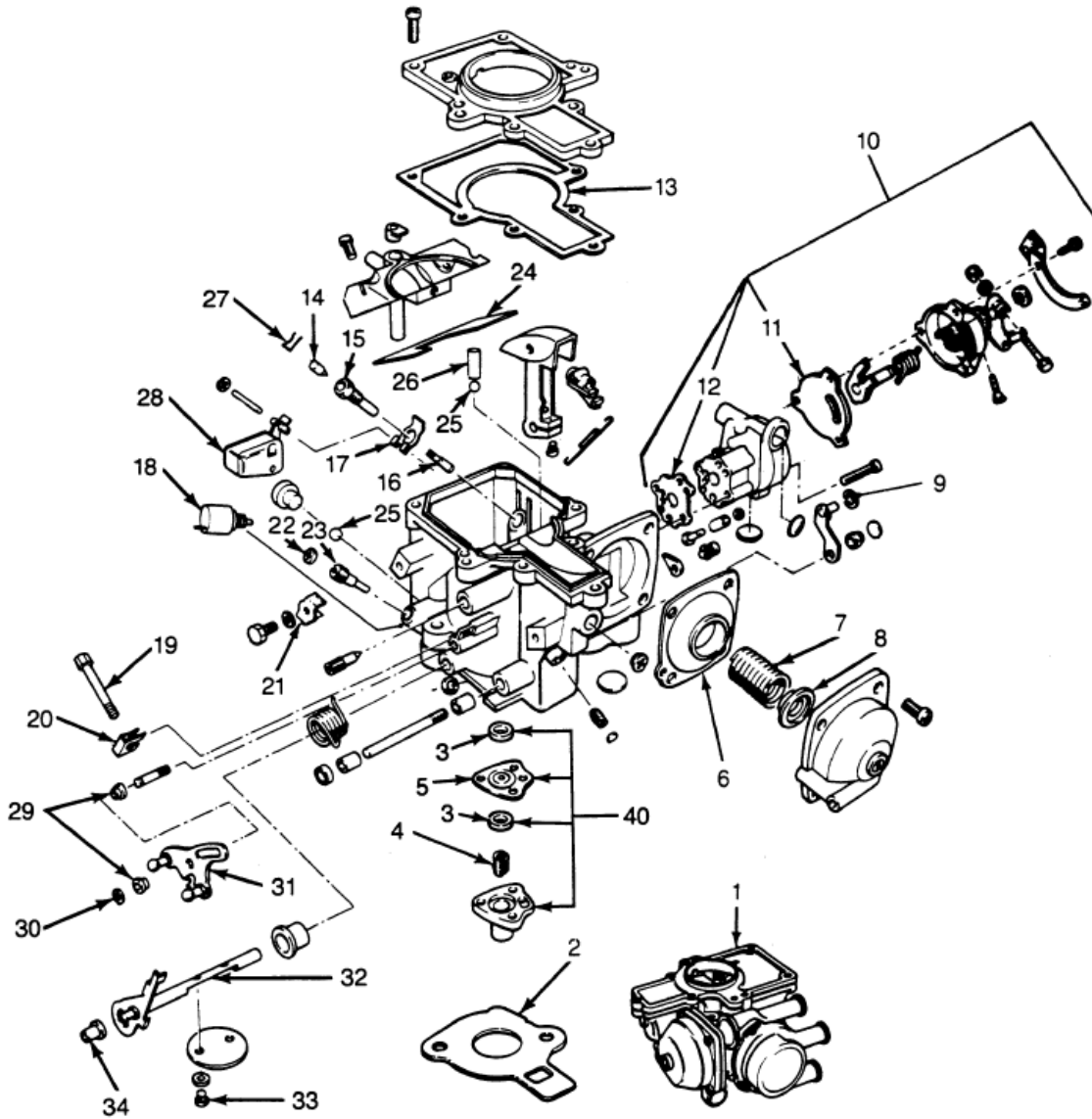
INTAKE, EXHAUST MANIFOLD AND RELATED PARTS — TYPICAL

IE-487C

FORD COMPONENT SALES
VSG - 411 - 413
MANIFOLDS & RELATED PARTS

ENG. NUMBER	PART NUMBER	DESCRIPTION	411	413
77BM 9441 DB	77BM 9441 DB	& INTAKE MANIFOLD GASKET (NOT REP. 07-07)	1	1
89BM 9441 AB	89BM 9441 AB	# INTAKE MANIFOLD GASKET	1	
E800157 S72	E800157 S72	# BOLT, M8 X 25 (NOT REP. 11-07)	6	6
F5JL 9430 AC	F5JL 9430 AC	# EXHAUST MANIFOLD, SIDE OUTLET	1	1
F5JL 9430 BC	F5JL 9430 BC	# EXHAUST MANIFOLD, BOTTOM OUTLET	1	1
F5JL 9430 CC	F5JL 9430 CC	# EXHAUST MANIFOLD, TOP OUTLET	1	1
77BM 9448 E	77BM 9448 E	& GASKET, EXHAUST MANIFOLD	4	4
95BM 9448 AC	95BM 9448 AC	# GASKET, EXHAUST MANIFOLD	4	4
N804828 S141	N804828 S8	STUD, M8 X 27.5, EX. MAN. TO HEAD	8	8
N620481 S2	N620481 S2	NUT, M8 UBS (YF 1581)	8	8
E5JL 5B255 AA	E5JL 5B255 AA	& ADAPTER, MUFFLER (NOT REP. 07-07)	1	1
N802594 S56	N802594 S56	& BOLT, M10 X 28.5, ADAPTER TO MAN.	3	3
F2AF 12A648 AA	F2AZ 12A648 A	# WATER TEMPERATURE SENSOR (DY 681)	1	1
E9JL 5246 AA	E9JL 5246 AA	# EXHAUST PIPE	1	1
74BB 9451 AA	D5RY 9450 A	# GASKET, EXHAUST PIPE TO MAN.	1	1
E620114 S83	E620114 S83	# NUT, EXHAUST PIPE TO MAN.	2	2
E9JL 5A235 AA	E9JL 5A235 AA	# BRACE, EXHAUST PIPE TO MAN.	1	1
D2AJ 5A231 AA	D1AZ 5A231 D	# CLAMP, EX. PIPE TO BRKT.	1	1
W708234 S439	W708234 S439	# BOLT, M8 X 14	1	1
87AB 2A411 BA	87AB 2A411 BA	# KIT, INTAKE MAN. PLUG	1	1
87AB 9H490 AA	F5RZ 9H490 A	# PLUG	1	1
87839 S	87839 S	PIPE PLUG, EXHAUST MANIFOLD 1/2-14	2	2
* USED ON @ USED ON # USED ON & USED ON	ENGINES HAVING ENGINES HAVING ENGINES HAVING ENGINES HAVING	A BREAKER POINT IGNITION SYSTEM A SOLID STATE IGNITION SYSTEM A DISTRIBUTORLESS IGNITION SYSTEM A BREAKER POINT OR SOLID STATE IGNITION SYSTEM		

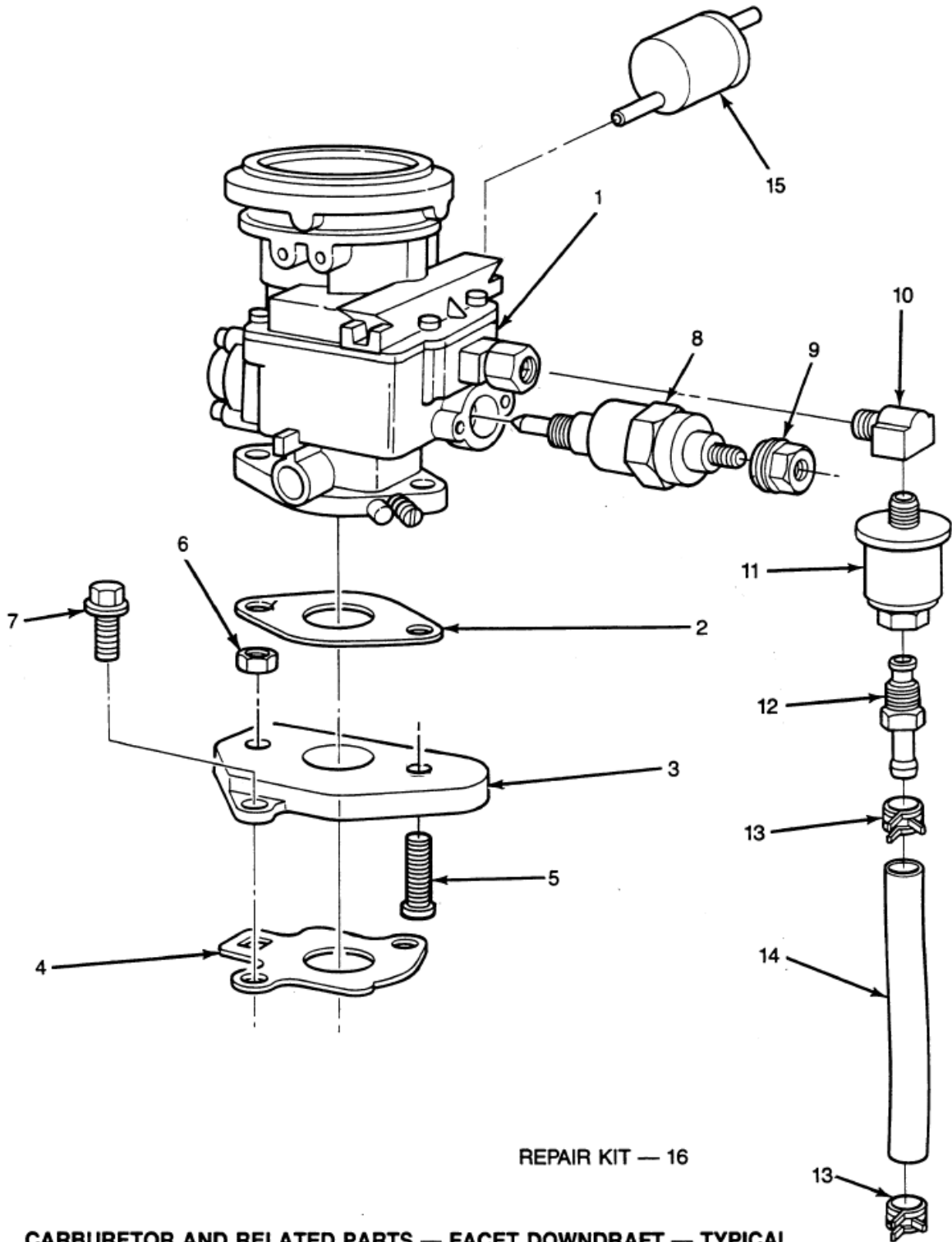
FORD COMPONENT SALES
VSG - 411 - 413
CARBURETORS & RELATED PARTS



CARBURETOR AND RELATED PARTS — VARIABLE VENTURI — TYPICAL

IE-488C

FORD COMPONENT SALES
VSG - 411 - 413
CARBURETOR & RELATED PARTS

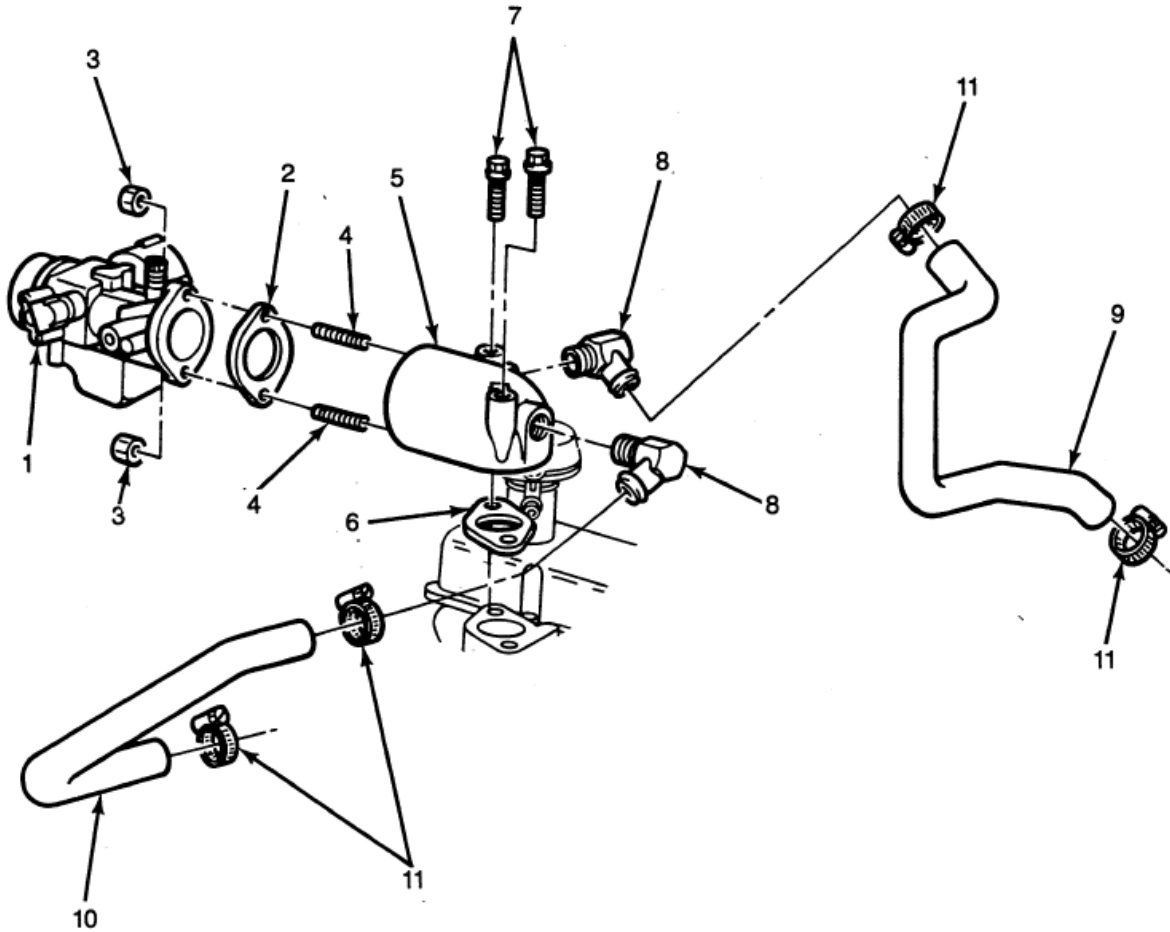


REPAIR KIT — 16

CARBURETOR AND RELATED PARTS — FACET DOWNDRAFT — TYPICAL

IE-524A

FORD COMPONENT SALES
VSG - 411 - 413
CARBURETORS & RELATED PARTS

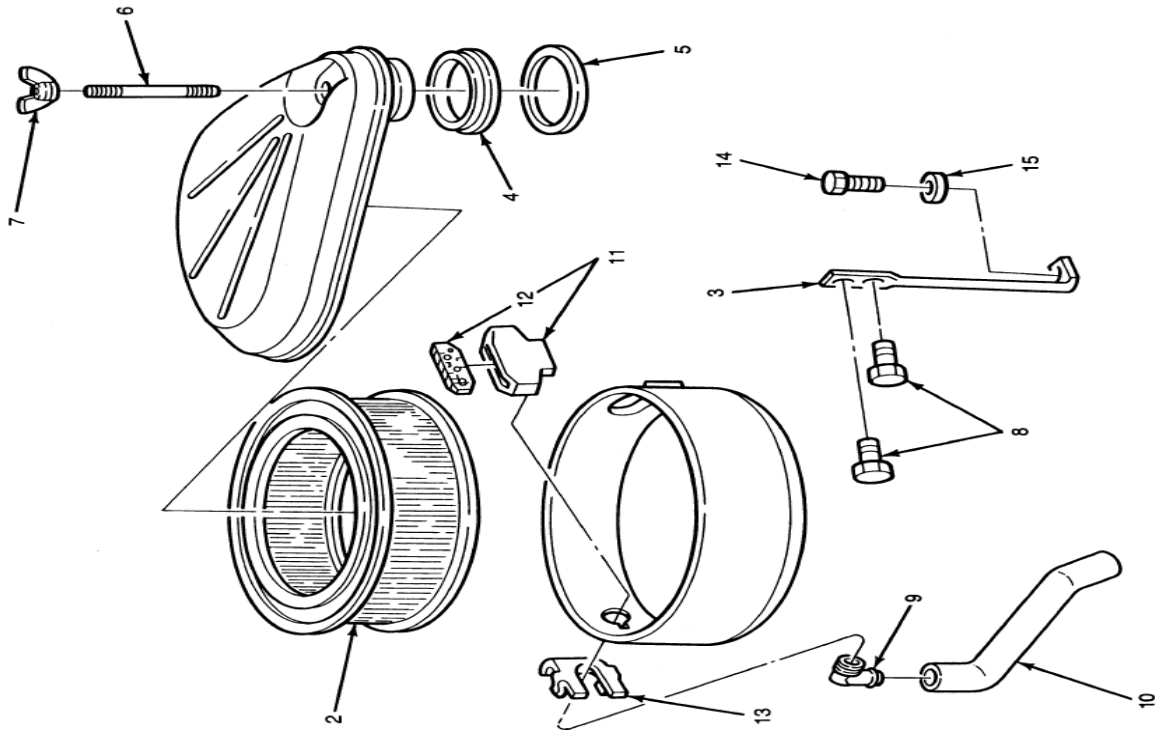
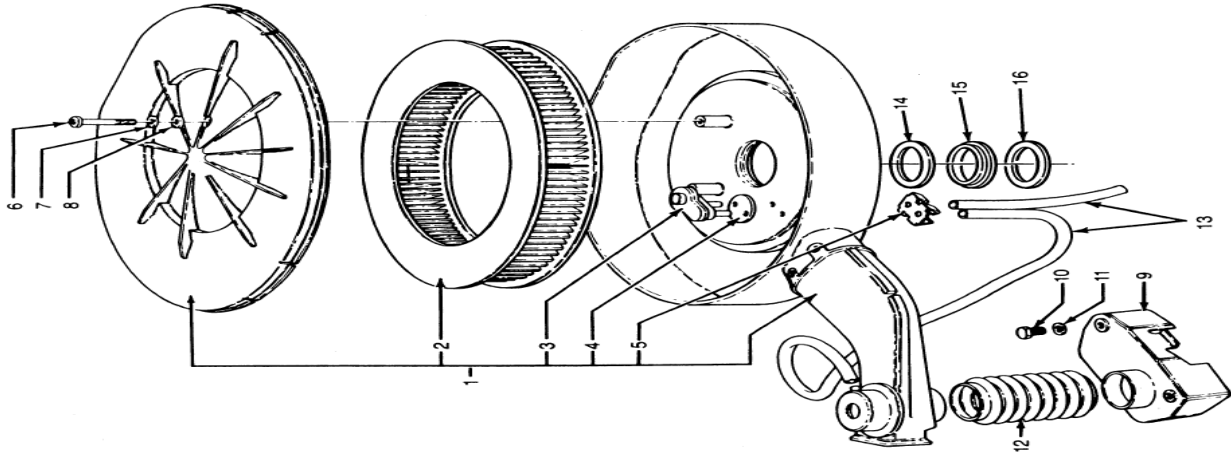


REPAIR KIT — 12

CARBURETOR ASSEMBLY AND RELATED PARTS
TYPICAL — SIDEDRAFT

IE-558A

FORD COMPONENT SALES
VSG - 411 - 413
AIR CLEANERS & RELATED PARTS



COMPLETE ASSEMBLY — 1

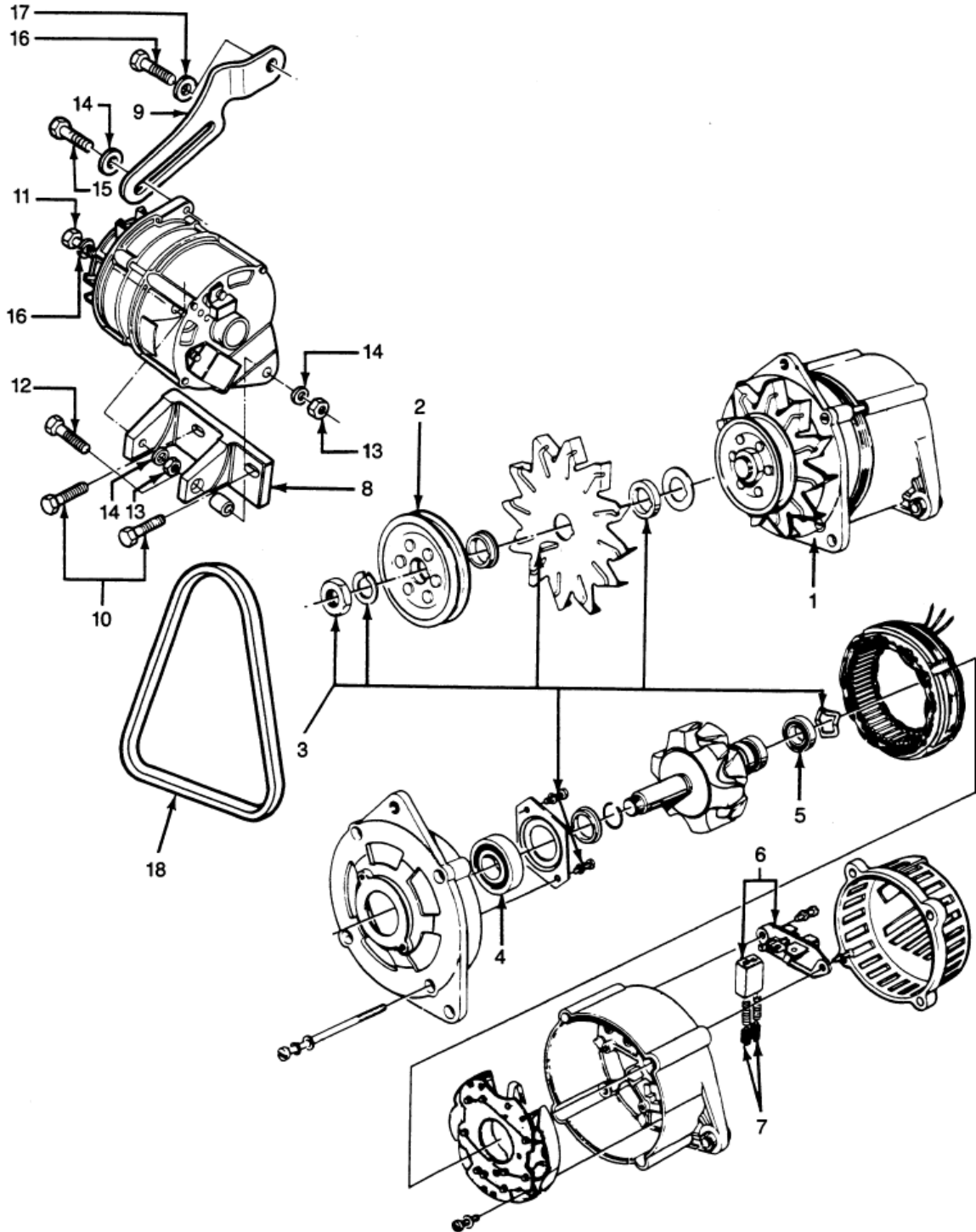
AIR CLEANER AND RELATED PARTS — TYPICAL

IE-523B

AIR CLEANER AND RELATED PARTS — TYPICAL

IE-489A

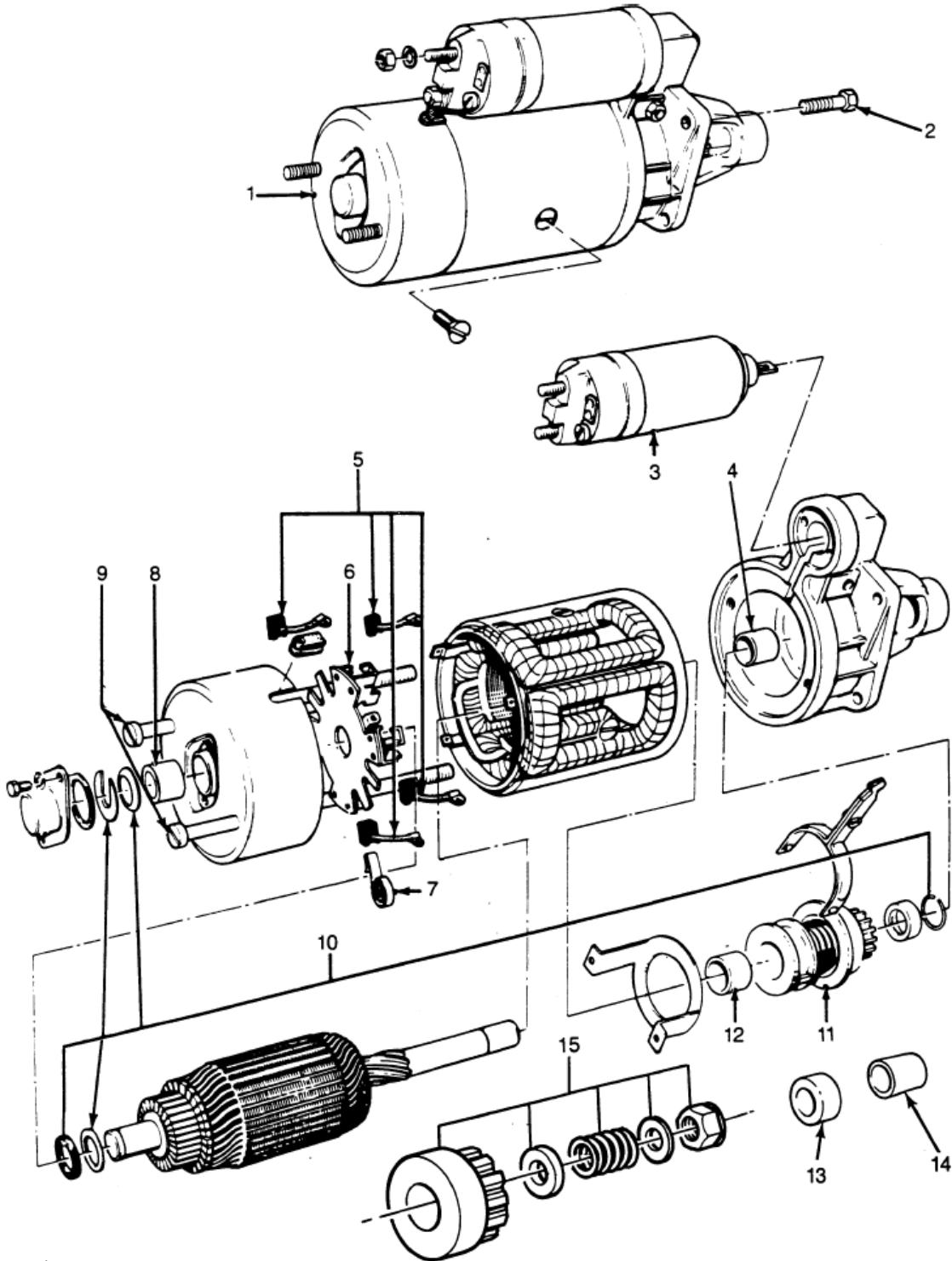
FORD COMPONENT SALES
VSG - 411 - 413
ALTERNATOR & STARTER



ALTERNATOR, REGULATOR AND RELATED PARTS — TYPICAL

IE-490B

FORD COMPONENT SALES
VSG - 411 - 413
STARTER



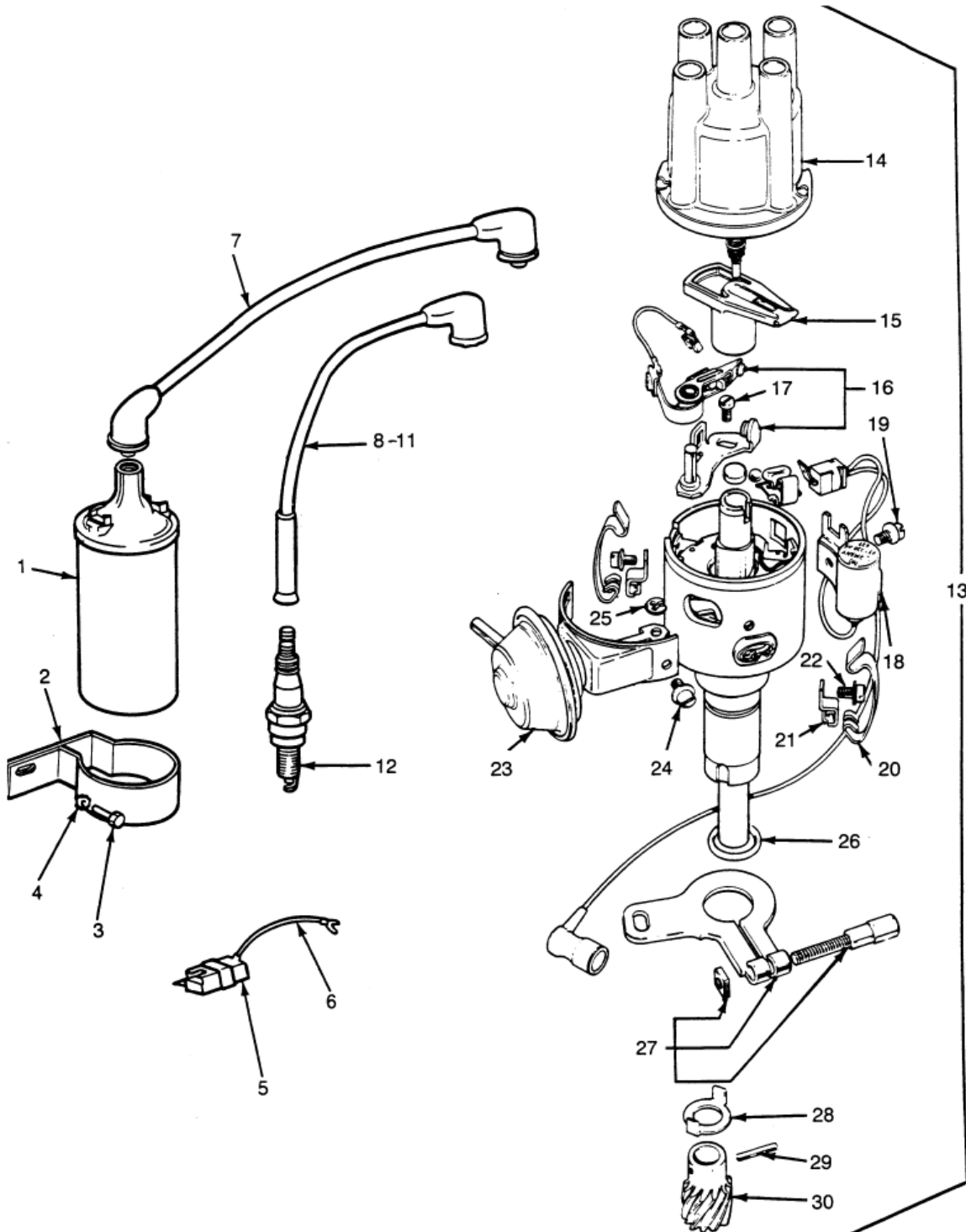
STARTER MOTOR AND RELATED PARTS — TYPICAL

IE-491

FORD COMPONENT SALES
VSG - 411 - 413
STARTER

ENG. NUMBER	PART NUMBER	DESCRIPTION	411	413
91AB 11000 JB	91AB 11000 JB	STARTER, LEFT SIDE MOUNT EXCEPT MARINE (<i>NOT REP. 02-08</i>)	1	1
2U1L 11000 EA	2U1L 11000 EA	STARTER, LEFT SIDE MOUNT EXCEPT MARINE	1	1
F4CU 11002 BB	FOFZ 11002 ARM	STARTER, RIGHT SIDE MOUNT, EXCEPT MARINE (<i>FA 774 RM</i>)	1	1
E6JL 11N004 AA	E6JL 11N004 AA	ADAPTER (<i>1" SPACER FOR E6JL-11001-AA STARTER</i>)	1	1
N606067 S439	N606067 S439	BOLT, M10 X 75, HOUSING TO STARTER	1	1
E7JL 11K149 AA	E7JL 11K149 AA	SHIELD, STARTER DRIVE, MARINE (<i>NOT REP. 04-08</i>)	1	1

FORD COMPONENT SALES
VSG - 411 - 413
IGNITION SYSTEM - BREAKER POINT TYPE



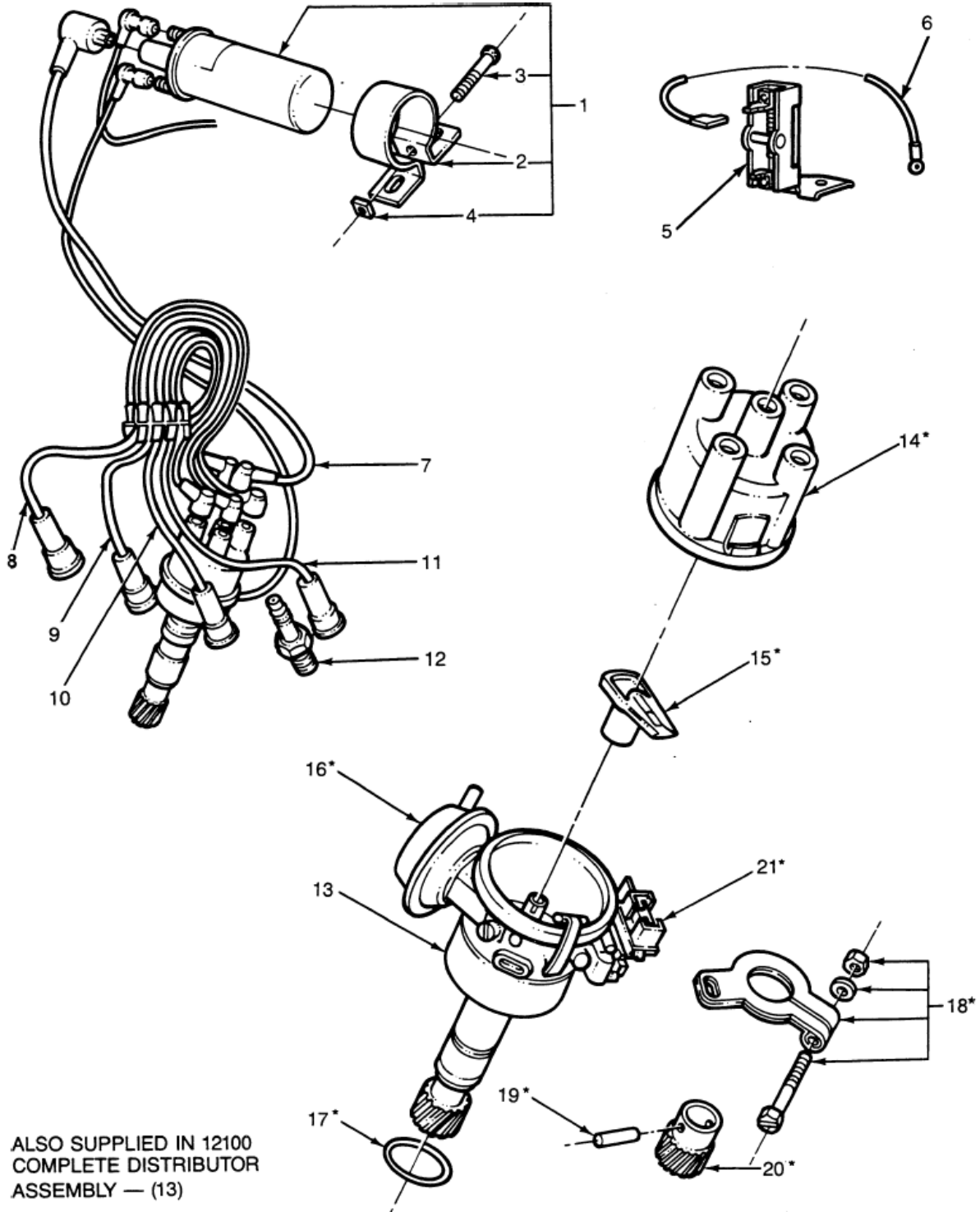
**BREAKER POINT IGNITION-COIL, DISTRIBUTOR,
 SPARK PLUGS AND RELATED PARTS - TYPICAL**

IE-492A

FORD COMPONENT SALES
VSG - 411 - 413
IGNITION SYSTEM - BREAKER POINT TYPE

ENG. NUMBER	PART NUMBER	DESCRIPTION	411	413
E8TF 12029 BA	B6A 12029 B	* IGNITION COIL (DG 5) (NOT REP. 01-07)	1	
C4AF 12043 A	B8S 12043 A	& COIL MOUNTING STRAP	1	
27185 S2	27185 S2	& SCREW, 10-32 X 1.625, COIL STRAP (NOT REP. 07-07)	1	
34656 S36	34656 S36	& NUT, 10-32, COIL STRAP (NOT REP. 07-07)	1	
D9JL 12250 A	D9JL 12250 A	& RESISTOR, IGNITION	1	
E5PZ 12259 P	E5PZ 12259 P	* IGNITION WIRESET (WR 3817 B)	1	
AGSF 22C	AGSF 22C	& SPARK PLUG	4	4
117 10254	D1FZ 12106 A	& DISTRIBUTOR CAP (DH 157)	1	
71HM 12200 AA	D1FZ 12200 A	* ROTOR (DR 92) (NOT REP. 07-06)	1	
83SF 12107 AA	83SF 12107 AA	* POINTS	1	
831F 12300 AA	831F 12300 AA	* CONDENSOR	1	
67555 S2	67555 S	& PIN, DISTRIBUTOR DRIVE GEAR RETAINING	1	1
* USED ON @ USED ON # USED ON & USED ON	ENGINES HAVING ENGINES HAVING ENGINES HAVING ENGINES HAVING	A BREAKER POINT IGNITION SYSTEM A SOLID STATE IGNITION SYSTEM A DISTRIBUTORLESS IGNITION SYSTEM A BREAKER POINT OR SOLID STATE IGNITION SYSTEM		

FORD COMPONENT SALES
VSG - 411 - 413
IGNITION SYSTEM - SOLID STATE



ALSO SUPPLIED IN 12100
 COMPLETE DISTRIBUTOR
 ASSEMBLY — (13)

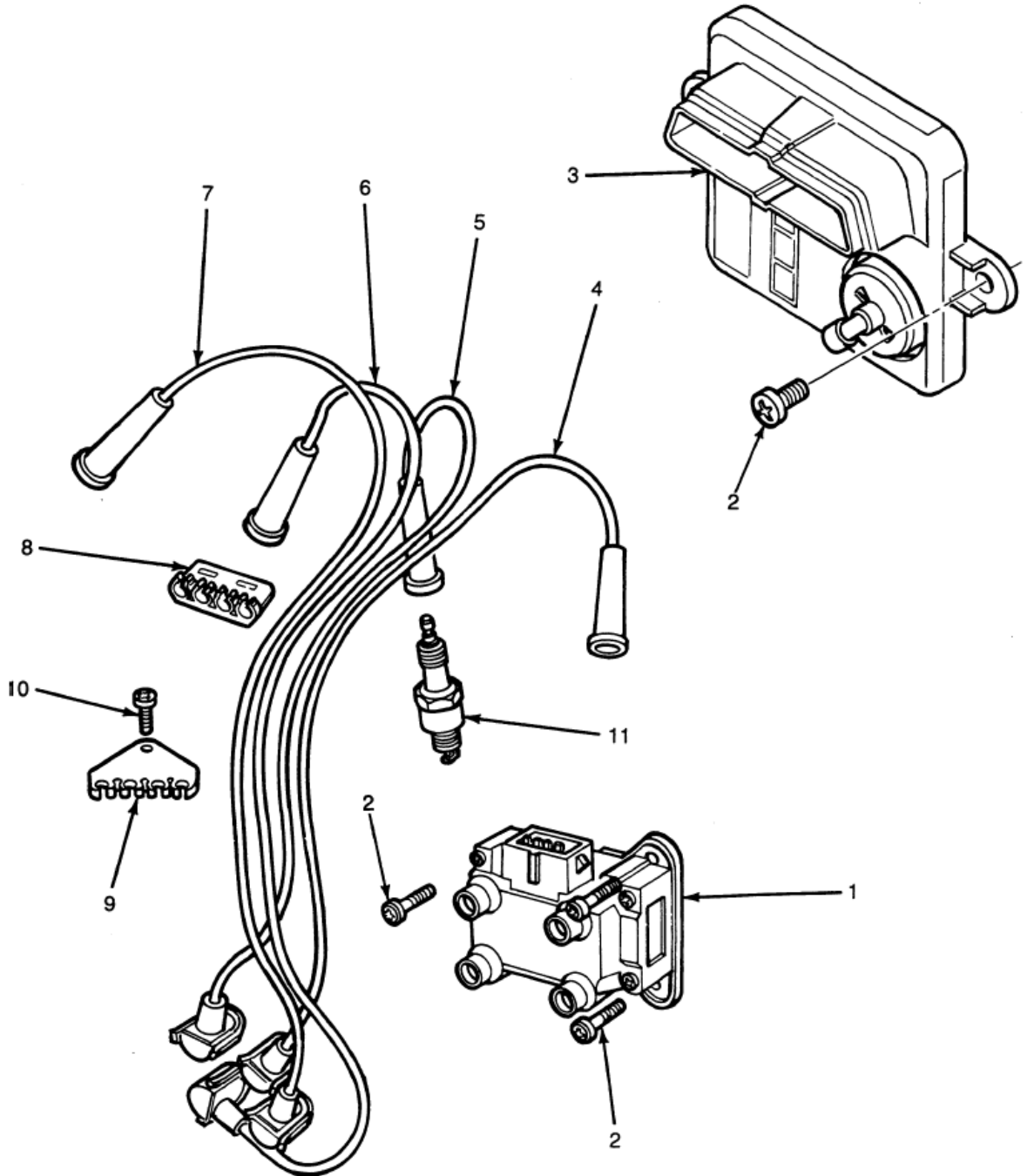
**SOLID STATE IGNITION - COIL, DISTRIBUTOR,
 SPARK PLUGS AND RELATED PARTS - TYPICAL**

IE-500A

FORD COMPONENT SALES
VSG - 411 - 413
IGNITION SYSTEM - SOLID STATE

ENG. NUMBER	PART NUMBER	DESCRIPTION	411	413
86FB 12024 AA	86FB 12024 AA	@ IGNITION COIL AND STRAP (NOT REP. 11-07)	1	1
C4AF 12043 A	B8S 12043 A	& COIL MOUNTING STRAP	1	
27185 S2	27185 S2	& SCREW, 10-32 X 1.625, COIL STRAP (NOT REP. 07-07)	1	
34656 S36	34656 S36	& NUT, 10-32, COIL STRAP (NOT REP. 07-07)	1	
D9JL 12250 A	D9JL 12250 A	& RESISTOR, IGNITION	1	
87BF 12283 AD	87BF 12283 AD	@ IGNITION WIRE # 2	1	1
87BF 12284 AB	87BF 12284 AB	@ IGNITION WIRE #3	1	1
87BF 12286 AB	87BF 12286 AB	@ IGNITION WIRE #1	1	1
87BF 12287 AC	87BF 12287 AC	@ IGNITION WIRE #4	1	1
AGSF 22C	AGSF 22C	& SPARK PLUG	4	4
117 10254	D1FZ 12106 A	& DISTRIBUTOR CAP (DH 157)	1	
84SF 12200AA	84SF 12200 AA	@ ROTOR	1	1
67555 S2	67555 S	& PIN, DISTRIBUTOR DRIVE GEAR RETAINING	1	1
86BF 12K062 AA	86BF 12K062 AA	@ IGNITION MODULE	1	1
* USED ON @ USED ON # USED ON & USED ON	ENGINES HAVING ENGINES HAVING ENGINES HAVING ENGINES HAVING	A BREAKER POINT IGNITION SYSTEM A SOLID STATE IGNITION SYSTEM A DISTRIBUTORLESS IGNITION SYSTEM A BREAKER POINT OR SOLID STATE IGNITION SYSTEM		

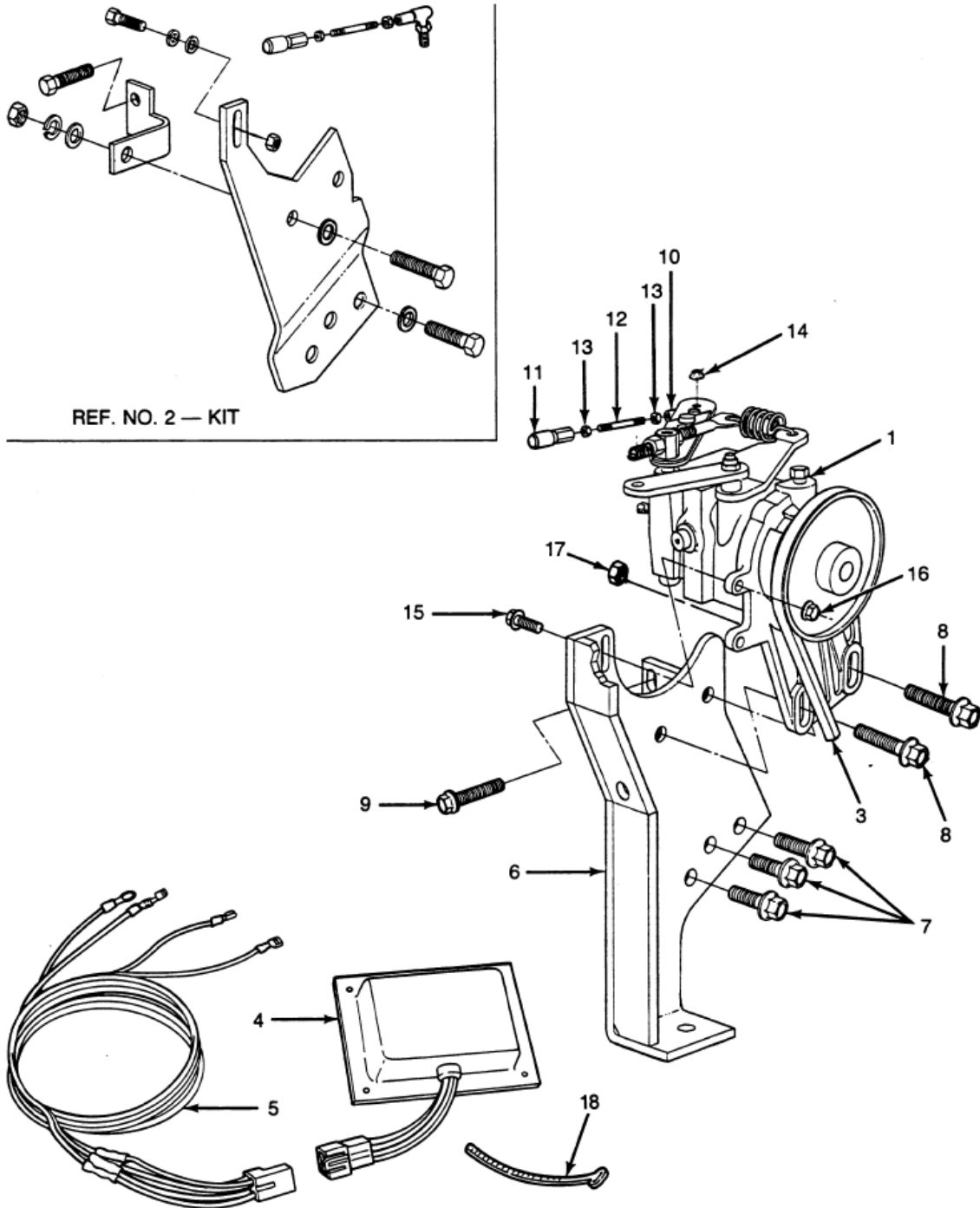
FORD COMPONENT SALES
VSG - 411 - 413
IGNITION SYSTEM - DISTRIBUTORLESS



**DISTRIBUTORLESS IGNITION — COIL, MODULE,
SPARK PLUGS AND RELATED PARTS — TYPICAL**

IE-525

FORD COMPONENT SALES
VSG - 411 - 413
GOVERNOR & RELATED PARTS

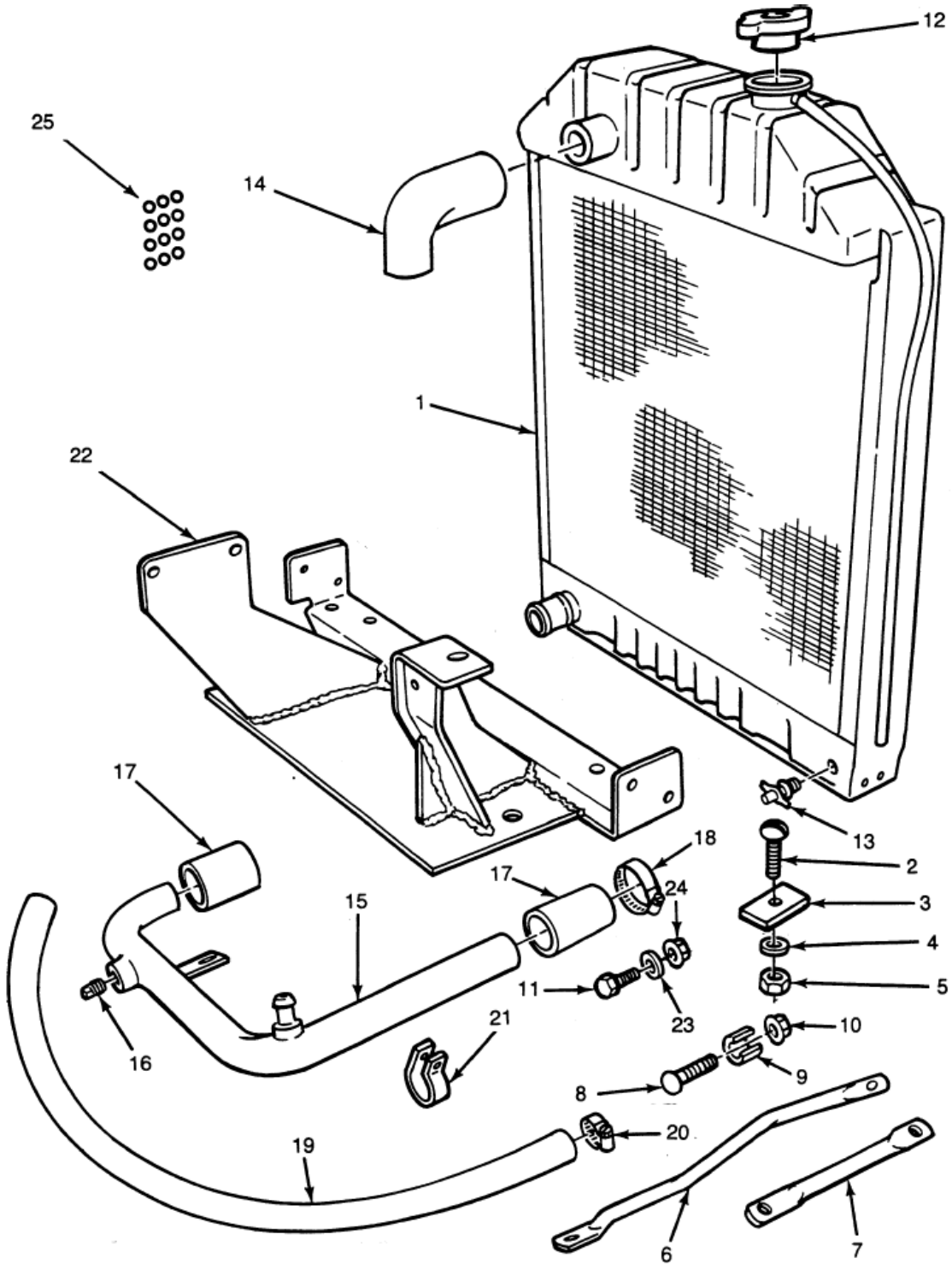


MECHANICAL GOVERNOR, SPEED LIMITING SWITCH AND RELATED PARTS — TYPICAL IE-493C

FORD COMPONENT SALES
VSG - 411 - 413
GOVERNOR & RELATED PARTS

ENG. NUMBER	PART NUMBER	DESCRIPTION	411	413
E5JL 12450 AC	E5JL 12450 AC	GOVERNOR, VARIABLE SPEED	1	1
E5JL 12450 CB	E5JL 12450 CB	GOVERNOR, 1800 RPM (NOT REP. 09-07)	1	1
E5JL 12450 DA	E5JL 12450 DA	GOVERNOR, 3600 RPM (NOT REP. 03-07)	1	1
E5JL 8620 AA	E5JL 8620 AA	& BELT, GOVERNOR, 1800 RPM (NOT REP. 08-07)	1	
E9JL 8620 AA	E9JL 8620 AA	# BELT, GOV., V/S & 3600 RPM	1	1
E9JL 8620 BA	E9JL 8620 BA	# BELT, GOV., 1800 RPM	1	1
E9JL 12454 AC	E9JL 12454 AC	# BRACKET, GOVERNOR MOUNTING, POWER UNIT	1	1
E9JL 12454 BA	E9JL 12454 BA	# BRACKET, GOVERNOR MOUNTING, ENGINE (NOT REP. 11-06)	1	1
N605920 S439	N605920 S439	BOLT, M10 X 33	2	2
N605788 S2	N605788 S2	# BOLT, M8 X 30 UBS	1	
E5JL 99810 BA	E5JL 99810 BA	BALL JOINT	1	1
E5JL 99810 AA	E5JL 99810 AA	& BALL JOINT	1	1
E7JL 99810 AA	E7JL 99810 AA	# BALL JOINT	1	1
E8JL 9A722 AB	E8JL 9A722 AB	# THROTTLE ROD	1	1
34079 S36	34079 S36	NUT, 10-32, HEX FLANGE (NOT REP. 04-08)	3	3
N606676 S439	N606676 S439	SCREW & WASHER, M6 X 25	1	1
33769 S2	33769 S2	# LOCKNUT, 1/4- 20 (NOT REP. 08-07)	1	
N620480 S2	N620480 S2	NUT, M6	1	1
N800152 S2	N800152 S2	@ NUT, M10	2	2
95873 S101	95873 S101	STRAP, WIRE HARNESS RETAINING	1	1
<i>* USED ON</i>	<i>ENGINES HAVING</i>	<i>A BREAKER POINT IGNITION SYSTEM</i>		
<i>@ USED ON</i>	<i>ENGINES HAVING</i>	<i>A SOLID STATE IGNITION SYSTEM</i>		
<i># USED ON</i>	<i>ENGINES HAVING</i>	<i>A DISTRIBUTORLESS IGNITION SYSTEM</i>		
<i>& USED ON</i>	<i>ENGINES HAVING</i>	<i>A BREAKER POINT OR SOLID STATE IGNITION SYSTEM</i>		

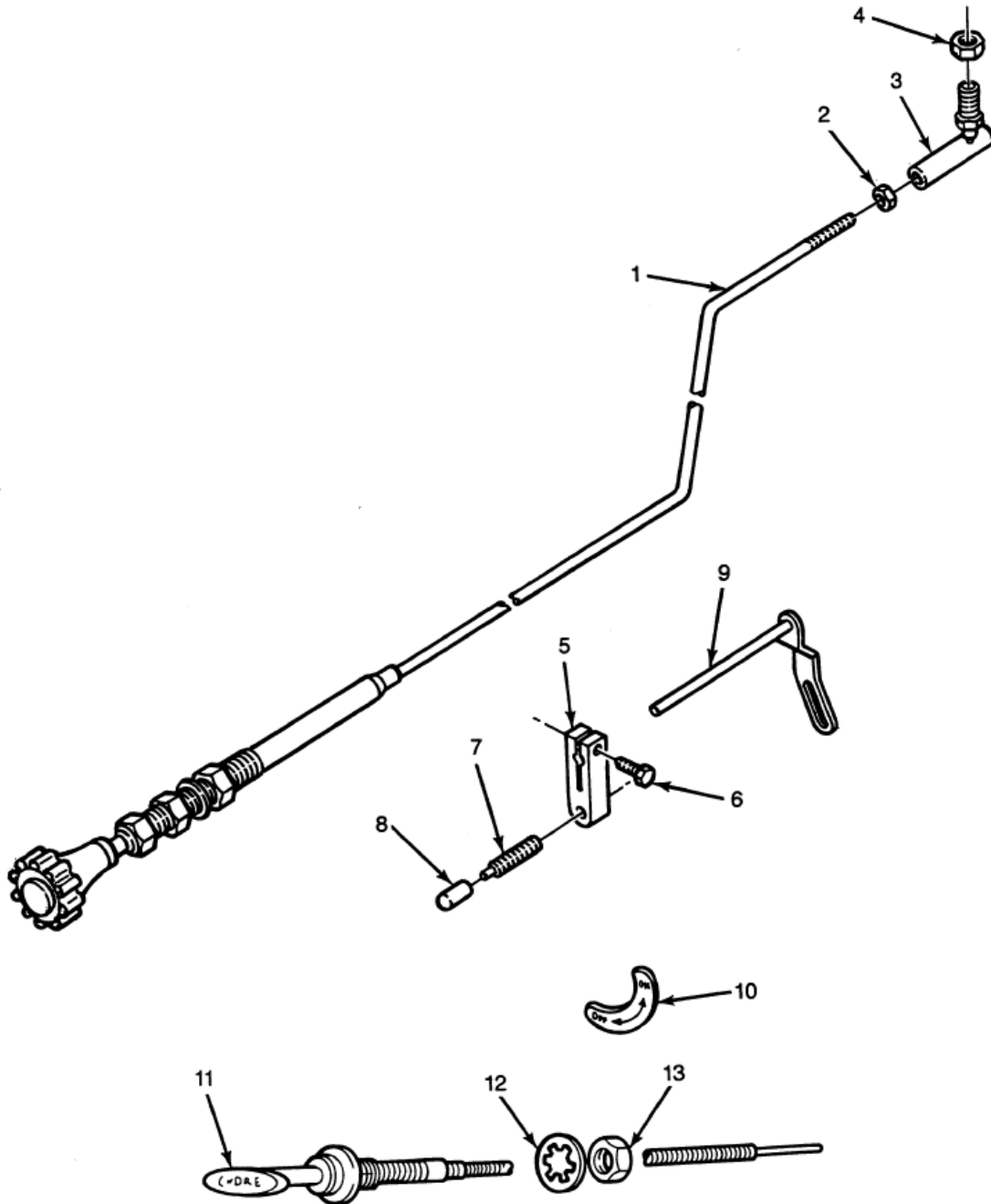
FORD COMPONENT SALES
VSG - 411 - 413
RADIATOR & ENGINE SUPPORTS



RADIATOR, FRONT SUPPORT AND RELATED PARTS — TYPICAL

IE-498B

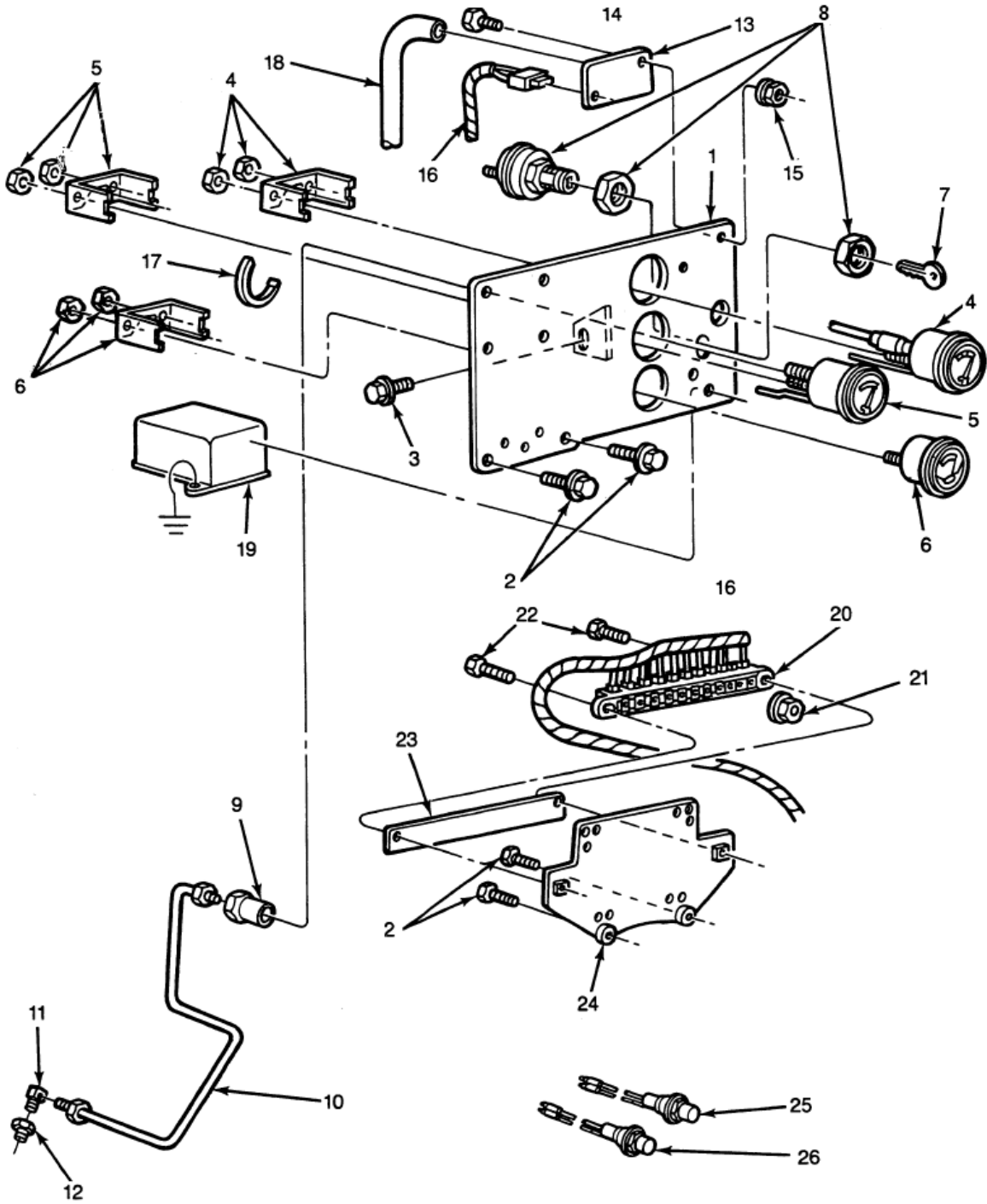
FORD COMPONENT SALES
VSG - 411 - 413
THROTTLE AND CHOKE CONTROLS



THROTTLE AND CHOKE CONTROLS — TYPICAL

IE-559

FORD COMPONENT SALES
VSG - 411 - 413
INSTRUMENTS AND WIRING HARNESSSES



INSTRUMENTS AND WIRE HARNESS — TYPICAL

IE-560



Power Products