

Figure 9. Engine - Toyota

FIGURE & INDEX	PART NUMBER		DESCRIPTION
	90 SERIES	80 SERIES*	
9			ENGINE - TOYOTA
-1	300339		Sleeve
-2	300526		Bumper, Rubber
-3	301542		Arm, Fwd/Rev
-4	301507		Coupling
-5	301544		Disc Assembly, Fwd/Rev
-6		400029	Screw, HHM, 3/8"-16x1.25"
-7		305397	
-8	300387		Sender, Oil Pressure
-9	300464		Mount, Isolation
-10	304851		Engine Mount, Left Rear
-11	400365		Nut, Hex, 12mm-1.25
-12	400364		Screw, HHM, 4mm-.7P x 12mm
-13	304922		Bar, Throttle Arm
-14	400371		Nut, Hex, 10mm x 1.25
-15	304918		Gasket, Exhaust Manifold
-16	400197		Screw, HHM, 6mm-1P x 40mm
-17	305853		Sender, Temp.
-18	303989		Engine, Toyota, 4 cylinder
-19	400290		Screw, HHM, 6mm-1P x 20mm
-20	305651		Spacer, Fan
-21	400211		Screw, HHM, 8mm-1.25P x 30mm
-22	305537		Pulley, Engine
-23	304921		Fitting, Elbow, 1/8 NPT
-24	304920		Fitting, Hose, 1/8" MPT x 5/16"
-25	400291		Screw, HHM, 8mm-1.25P x 16mm
-26	304846		Mount, Coil
-27	400402		Screw, HHM, 12mm
-28	305386		Bracket, Radiator Hose
-29	305778		Mount, Hydraulic Filter
-30	304835	304852	Bracket, Engine Mount
-31	400195		Nut, Hex, 8mm x 1.25P
-32	305277		Gasket, Oil Drain Fitting
-33	304931		Fitting, Oil Drain
-34	302144		Clamp, Hose, 1/2"
-35	301716		Hose, Oil Drain
-36		305320	Coupling, Pump Drive
-37	304773		Adapter, Pump Drive (Not Shown)
-38	301718		Key, 1/4" sq. x .88" (Not Shown)

* When no part number appears in this column, the part number for the 80 Series is the same as that for the 90 Series.

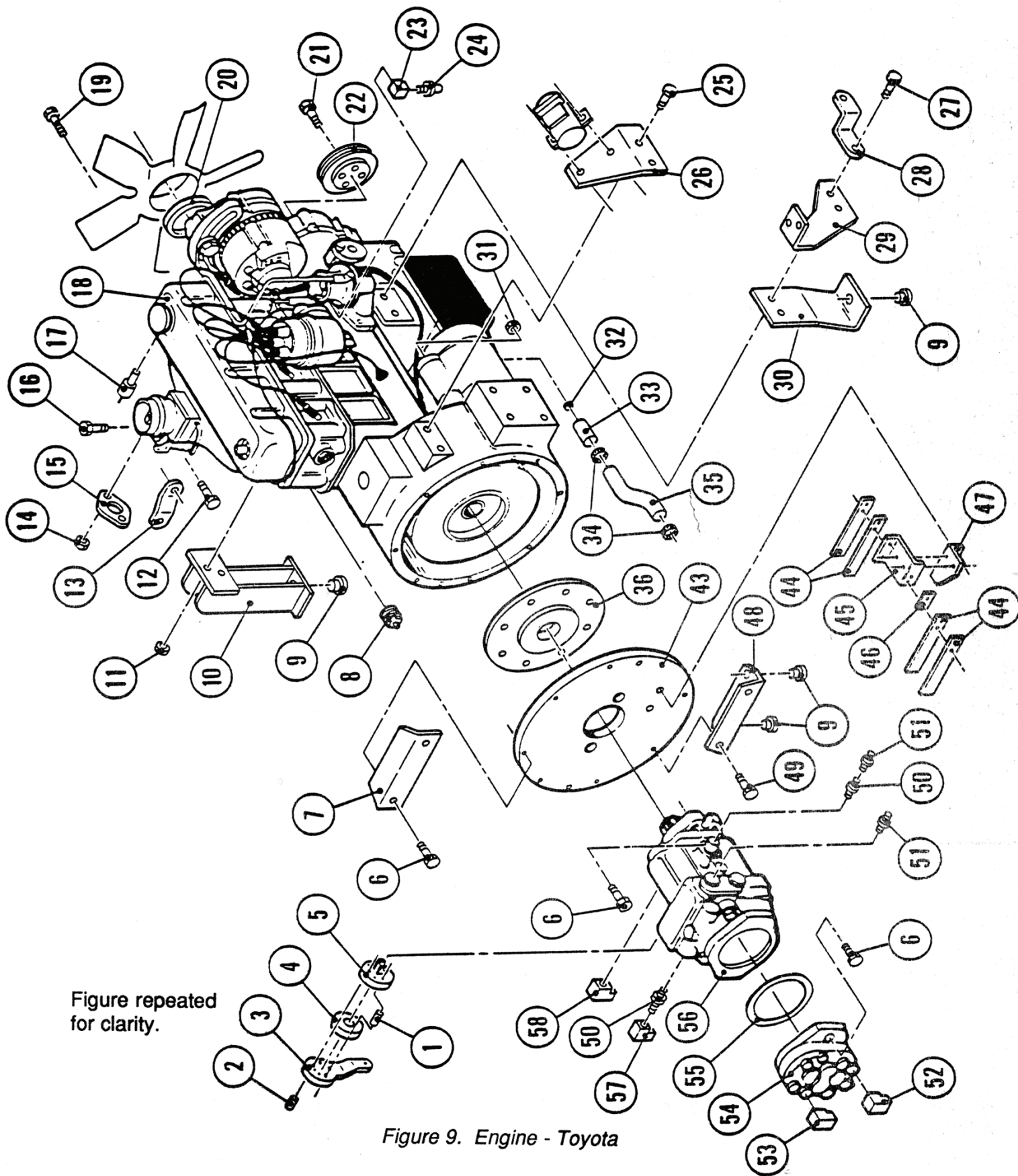


Figure repeated
for clarity.

Figure 9. Engine - Toyota

FIGURE & INDEX	PART NUMBER		DESCRIPTION
	90 SERIES	80 SERIES*	
9			ENGINE - TOYOTA (cont.)
-39	400372		Screw, HHM, 10mm-1.25P x 32mm (Not Shown)
-40	400366		Screw, HHM, 10mm-1.25P x 42mm (Not Shown)
-41	302558		Sprocket Assembly, Driven & Drive (Not Shown)
-42	300531		Bushing, Tapered (Not Shown)
-43	304764	305303	Plate, Pump Mounting
-44	300543		Spring, Return
-45	302115		Bracket, Forward/Reverse
-46	303918		Spacer, Forward/Reverse
-47	304825		Bracket, Directional Control
-48		305313	Mount, Engine
-49		400028	Screw, HHM, 3/8"-16 x 1.5"
-50	400167		Fitting, Adapter 1 1/16-12
-51	400157	304899	Fitting
-52	400154	400155	Fitting
-53	400156		Fitting, 90°, 1 5/16-12
-54	300482		Pump, Auxiliary
-55	303711		O-Ring, Static Seal
-56	303581	303582	Pump, Main
-57	400154		Fitting, 90°, 3/4"-16
-58	400153		Fitting, 90°, 9/16-18

* When no part number appears in this column, the part number for the 80 Series is the same as that for the 90 Series.



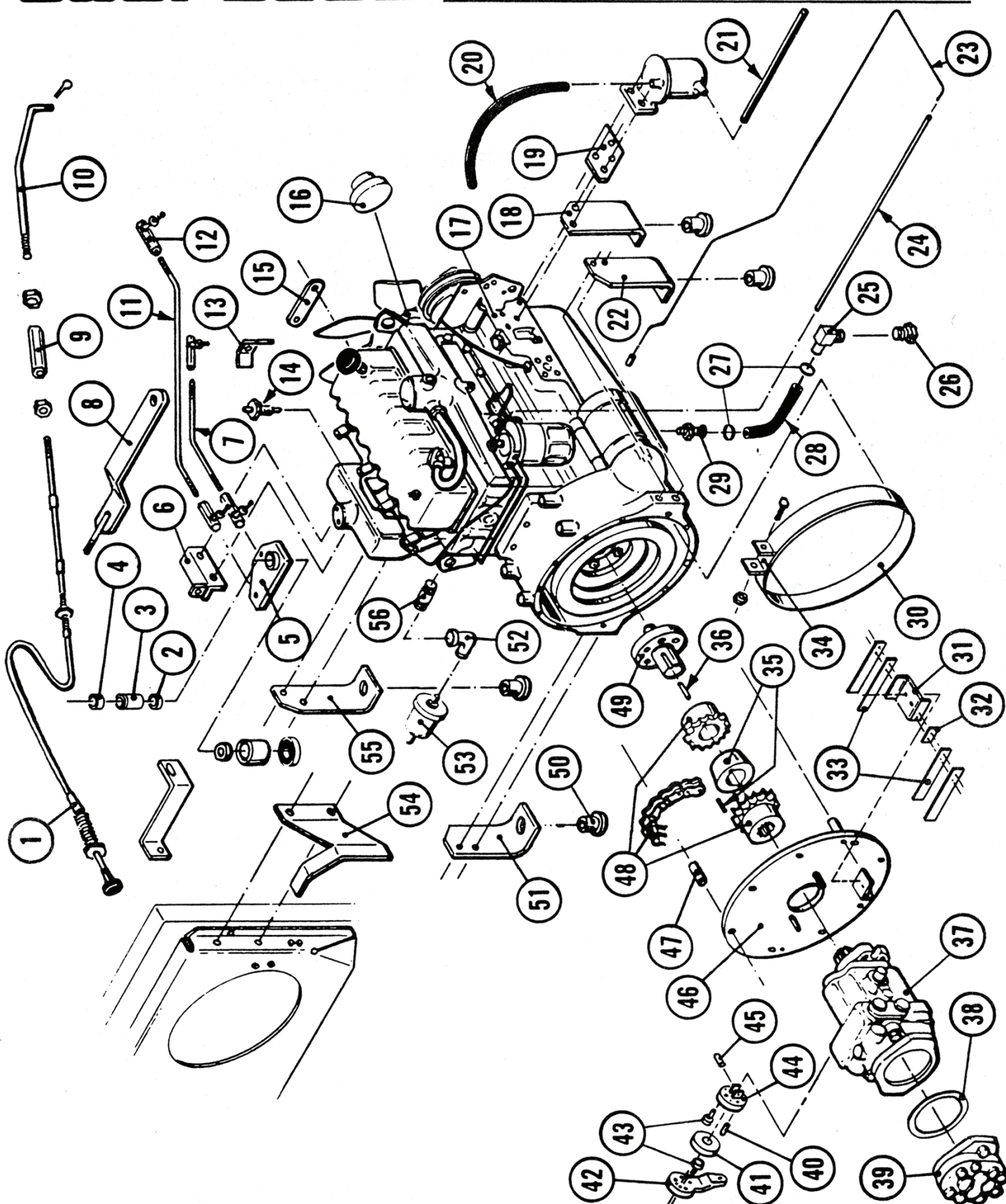


Figure 10. Engine - Perkins Diesel