

For Earth, For Life


SI Engine Tool Launcher User Manual

Ver. 1.0.0.0

July 2015
Kubota Corporation

Table of Contents

1. Overview.....	1
2. Operating environment	1
3. Installation	2
4.How to use	10
4.1 How to start.....	10
4.1.1 Auto-detect start.....	10
4.1.2 Start without auto-detect	11
4.2 Main Screen	11
5. Program Uninstall	13

1. Overview

SI Engine Tool Launcher is software used to automatically determine the SI engine diagnostic tool (EDIS(GCP), EDIS(4G), or KGST), and launch the appropriate diagnostic tool for Kubota-manufactured engines.

This document describes how to install and use the software. For details on how to use each diagnostic tool, refer to the User Guide that was provided with the tool.

The specifications and features of this software are subject to change without notice in conjunction with upgrades. Thank you for your understanding.

2. Operating environment

The required specifications of PC's on which this software is to be installed are as follows:

PC hardware environment

CPU	Intel Pentium4 or equivalent 1 GHz or higher
Memory	Minimum 512MB
Hard disc capacity	Minimum unused capacity 500MB
Display	XGA (1042 x 768) minimum 256 color palette
USB port	Dedicated ECOM interface connection with a Ver.1.1/2.0 1 port I/F connection via a hub cable cannot be guaranteed

PC software environment

OS	32/64bit Microsoft Windows 7/8.1 Japanese or English versions
Required components	Microsoft .NET Framework 3.5SP1 and higher ECOM interface compatible drivers (EControl drivers)

The Kubota-manufactured engines for diagnostics are the following models:

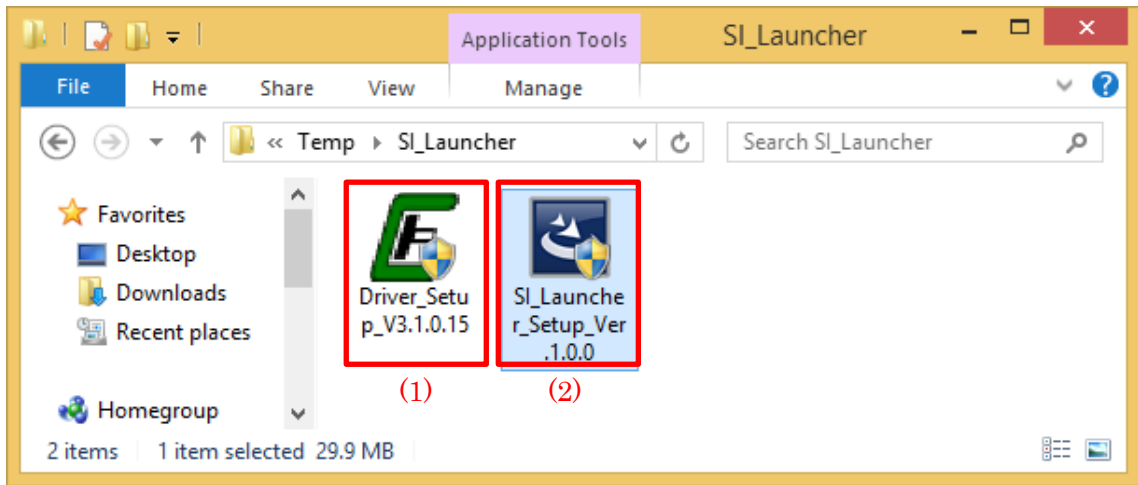
For Engine Base Model

Kubota Engine	WG972(*1) / WG1605 / WG2503(*2) / WG3800
---------------	--

*1: KGST must be installed separately.

*2: To perform diagnostics for some models, it is necessary to install KGST separately.

3. Installation



To install the software, double-click the file (2), and follow the on-screen instructions.

If the ECOM driver is not installed on the applicable PC, double-click file (1), and set up the driver.

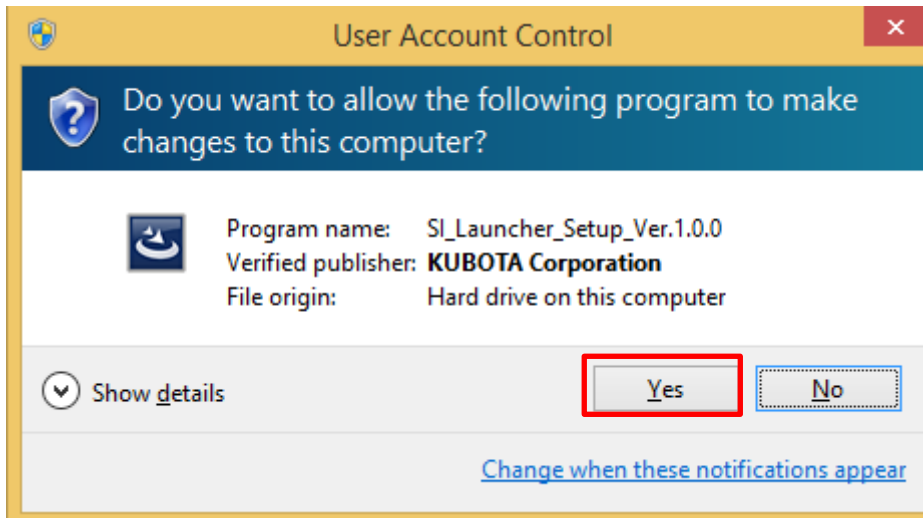
(1)	ECOM interface driver setup program.
(2)	SI Launcher Setup program. (SI_Launcher_Setup_Ver.X.XX.XXX) Includes the installers for EDIS(GCP) and EDIS(4G).

■ Attention

- Close all other applications before starting the installation. Failure to do so may prevent the software from being installed correctly.
- If EDIS(GCP) or EDIS(4G) are already installed on the applicable PC, it is recommended that you uninstall EDIS beforehand.
- (1) The ECOM interface driver is not included in file (2). If the ECOM interface has never been used on the applicable PC, it is necessary to install the driver by executing (1) individually.

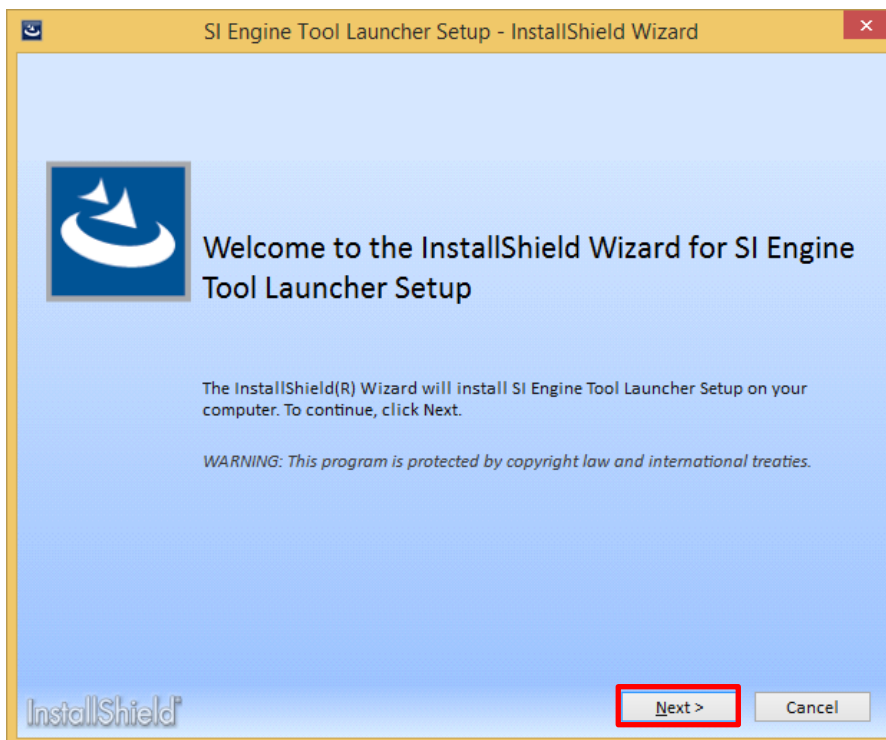
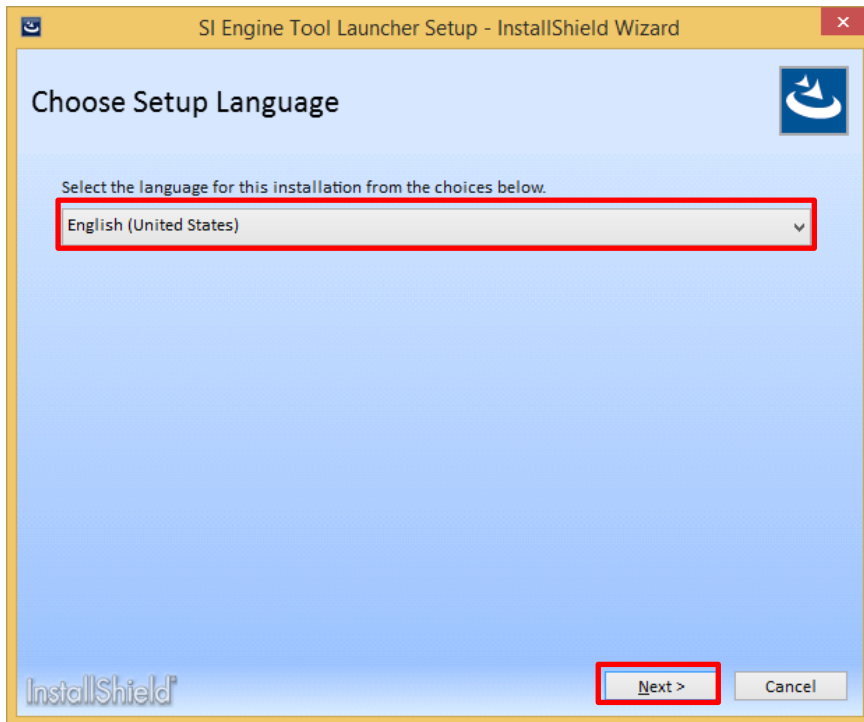
■ Supplementary notes

- When the following message is displayed, click [Yes].



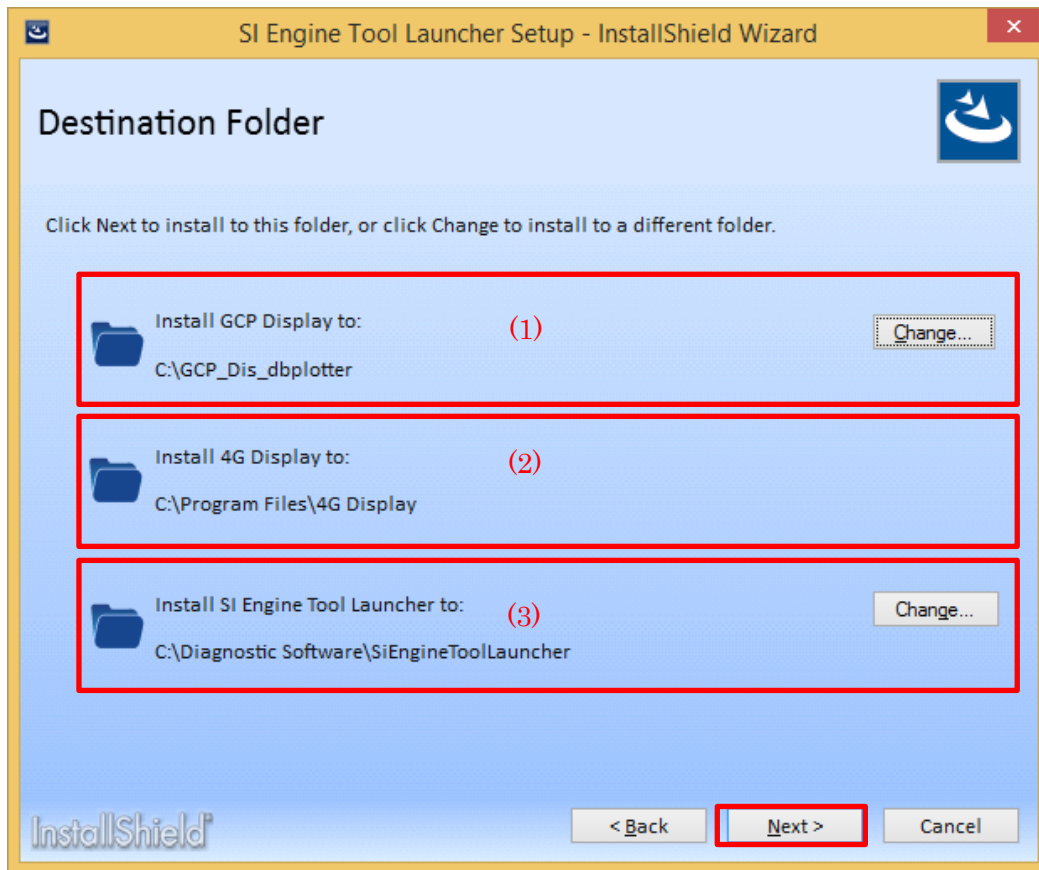
- If installing from a user account that does not have administrator privileges, it will be necessary for a user with administrator privileges to enter their password.

Follow the on-screen instructions to install.



Specify the destination folder for installation of the diagnostic tools and this software.

To change the installation folder, click any of the "Change" buttons, and then specify an installation folder from the tree on the screen.



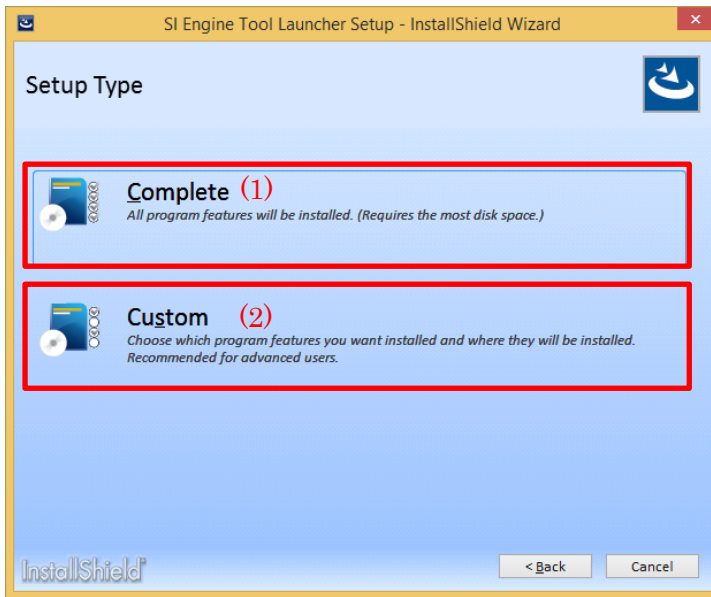
(1)	You can specify the install location for the diagnostic tool EDIS (GCP) made by Econtrols Corporation.(*1)
(2)	You cannot change the install location of the EDIS (4G) diagnostic tool made by Econtrols Corporation
(3)	You can specify the install location for SI Engine Tool Launcher(*1)

*1: Under the following folder structure, do not install any programs.

- Program Files
- Program Data
- Program Files (x86)
- Windows

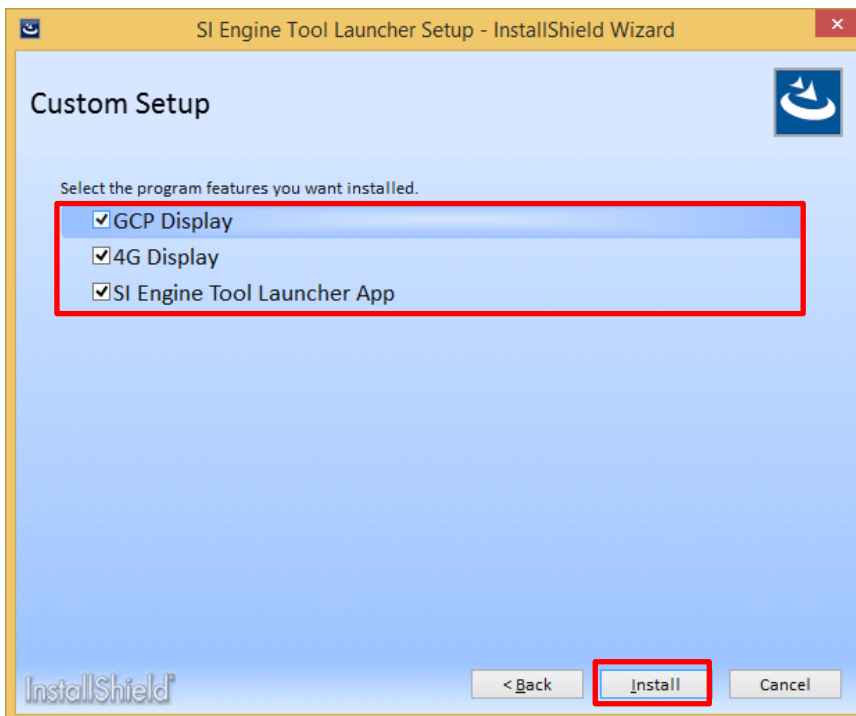
If there is no problem with each of the installation locations, please proceed to the next step by pressing the Next button.

Perform selection of the installation method.



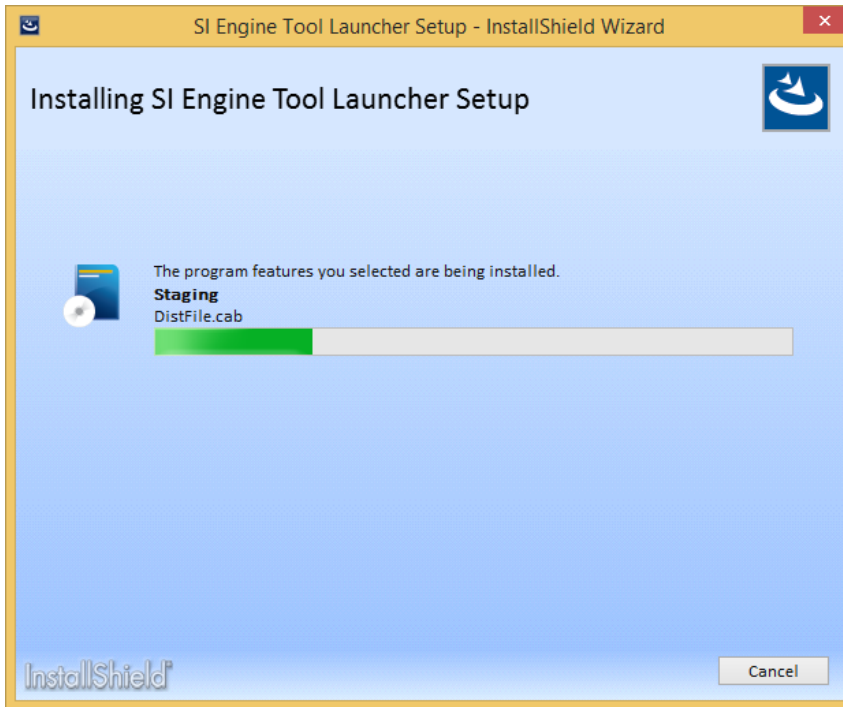
(1)	Installs all items - Diagnostic tool (EDIS (GCP), EDIS (4G)) and all the SI Engine Tool Launcher
(2)	Installs only the items you selected from the following screen (*1) for which you want installed.

*1: Performs the selected installation.

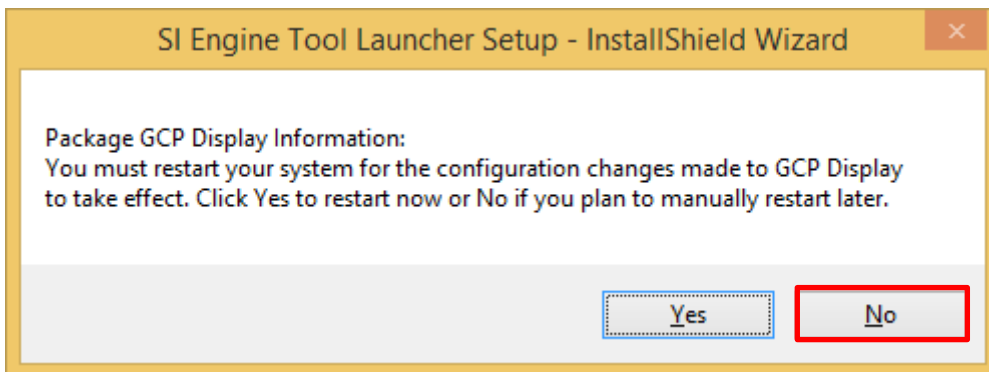


Only the features that were selected using the check box will be installed.

Installation will begin.



* 1: You will see the following screen requesting you to restart when installing GCP Display, however, there is no need to restart right now. If you select to restart, the install will end at this point. (this software installation will also end normally)



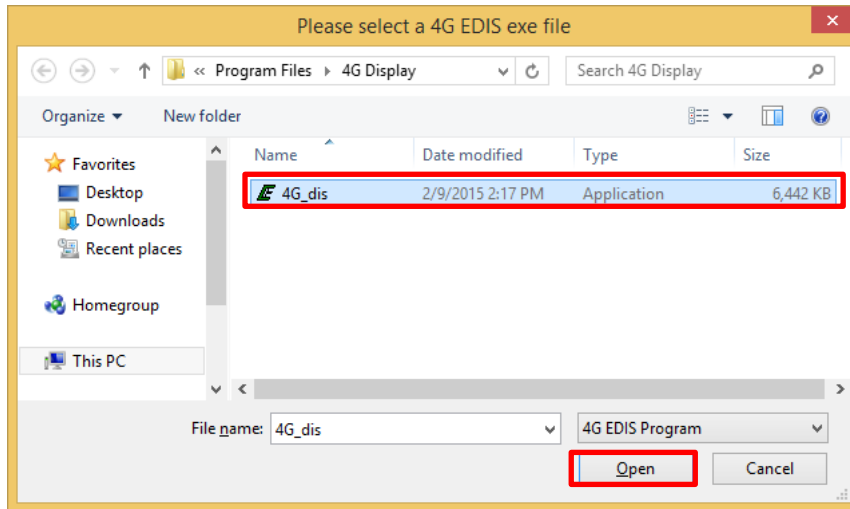
If the following screen displays, installation is complete.



(Supplementary items)

If you have a partial older version of EDIS (4G, GCP) installed from before, the location of the EDIS launcher app may not be recognized. In such a case, a screen to select the EDIS exe file will display only the first time you start the launcher application.

When the following screen is displayed, move to the folder where the previous EDIS program was installed and select the exe file, then press the Open button.



The above screen for 4G EDIS.

The initial installation folder for 4G EDIS is Program Files/4G Display/

The initial installation folder for GCP EDIS is C:/GCP_Dis_dbplotter/

4.How to use

4.1 How to start

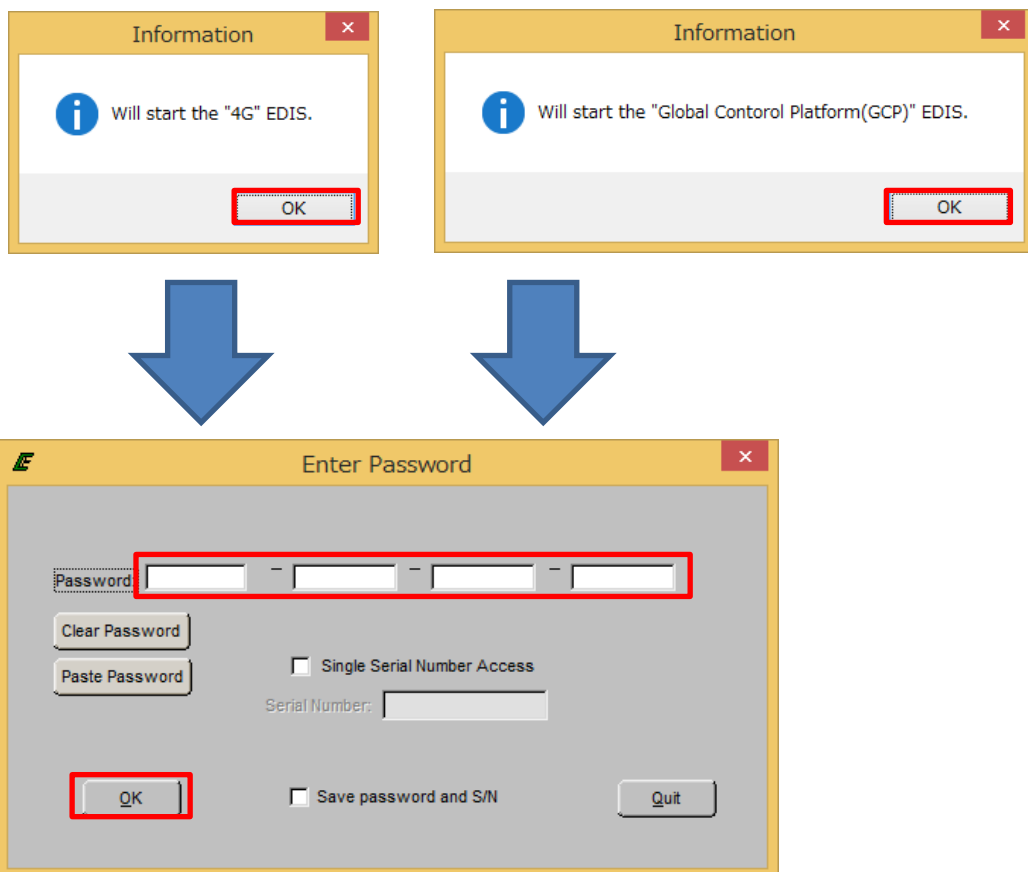
There are two methods to use for starting: "**Auto-detect start**" and "**Start without auto-detect**".

4.1.1 Auto-detect start

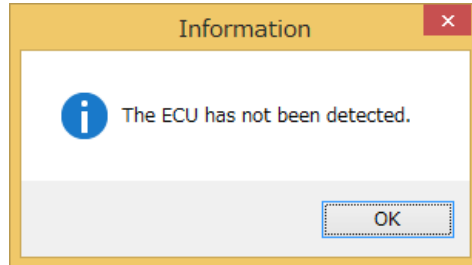


When the ECU (Engine) is in the Key On state, and connected to a PC, double click the SI Engine Tool Launcher icon on the PC desktop.

When the auto-detect start is successful, each diagnostic tool will start after each auto-detect start result dialog is displayed.



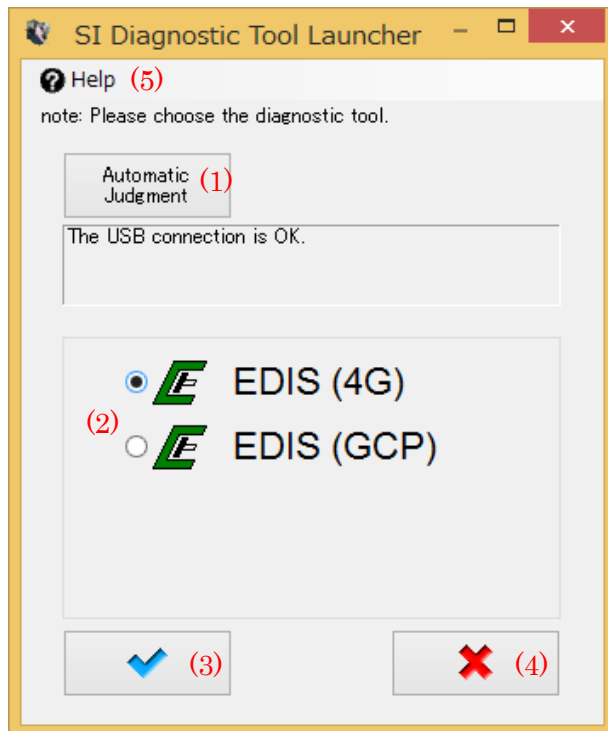
When auto-detect start doesn't start due to a reason such as communication error the ECU is not in the Key ON state, the 4.2 Main Screen will be displayed after the "The ECU has not been detected." message appears.



4.1.2 Start without auto-detect

When doubling clicking the SI Engine Tool Launcher icon on the desktop when ECOM is not connected to a PC, or when pressing and holding the Ctrl key, auto-detect start processing is skipped, and the 4.2 Main Screen is displayed directly.

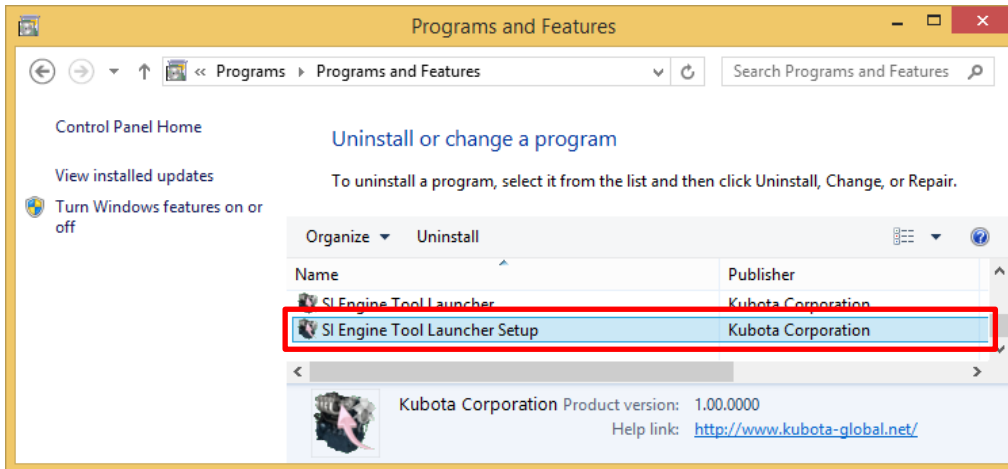
4.2 Main Screen



(1)	When pressing while connected to the ECU (engine) in the Key ON state, the corresponding diagnostic tool will start automatically. Pressing is invalid when ECOM is not connected to a PC.
(2)	Selects the diagnostic tool for the applicable operation.

(3)	Starts the diagnostic tool selected in (2).
(4)	Ends the application.
(5)	<ul style="list-style-type: none"> • Help : <ul style="list-style-type: none"> -User Guide : Starts the Diagnostic tool User Guide selected in (2). An environment that allows for executing a pdf file to view/open the User Guide is required. -Version Info : Displays this software version info and the installed diagnostic tool's detailed version information.

5. Program Uninstall



To uninstall the program, execute the setup exe file used for installation, and choose either delete from the maintenance menu or delete by selecting [Control Panel] → [Add or Delete Program] → then delete. Doing it this way, you can select each application individually and also delete it, however, when you select "SI Engine Tool Launcher Setup", it will delete the all applications that were installed at one time.